

ST. LOUIS, MISSOURI

AL-5400 (FAA)

24025

WAAS CH 81914 W26B	APP CRS 259°	Rwy Idg 7004 TDZE 462 Apt Elev 463
--	------------------------	---

RNAV (GPS) RWY 26L

SPIRIT OF ST LOUIS (SUS)

RNP APCH - GPS.

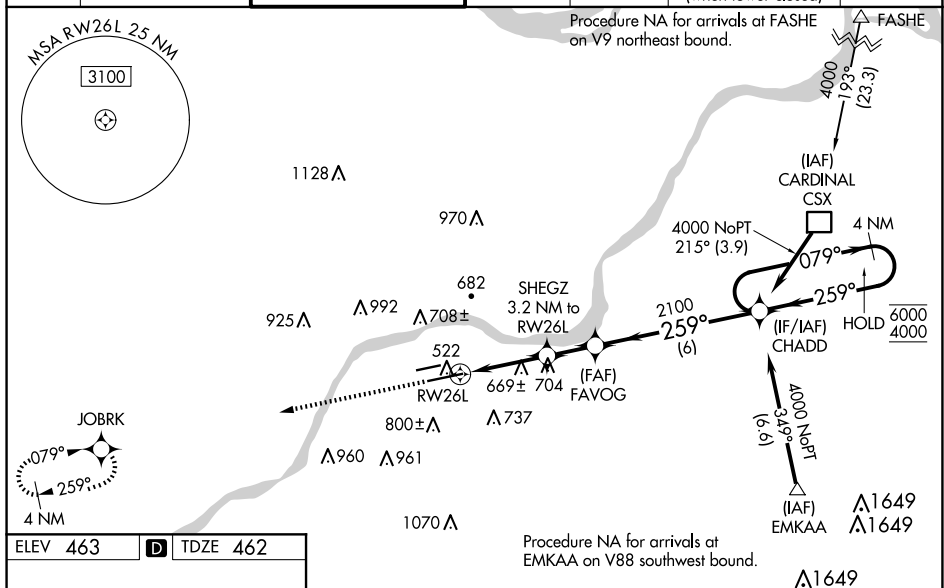
- A** Baro-VNAV and VDP NA when using St Louis Lambert Intl altimeter setting. For uncompensated Baro-VNAV systems, LNAV/VNAV NA below -18°C or above 54°C. For inop ALS when using St Louis Lambert Intl altimeter setting, increase LNAV/VNAV all Cats visibility to 1½ SM and LNAV Cat C and D to 1¾ SM. When local altimeter setting not received, use St Louis Lambert Intl altimeter setting: increase LPV DA to 705 feet; increase LNAV/VNAV DA to 959 feet and all visibilities to RVR 5000; increase all MDAs 60 feet and LNAV visibility Cat C/D to RVR 5500 and Circling visibility Cat C ¼ SM.
- *RVR 1800 authorized with use of FD or AP or HUD to DA (NA when using St Louis Lambert Intl altimeter setting).

MALS R

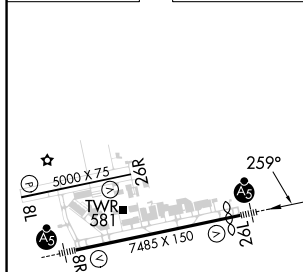


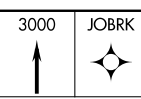
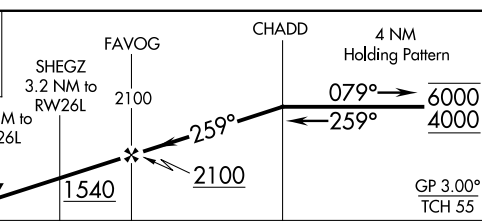
MISSED APPROACH:
Climb to 3000 direct
JOBKR and hold.

ATIS 134.8	ST. LOUIS APP CON 126.5 254.3	SPIRIT TOWER* 124.75 (CTAF) 0 257.2	GND CON 121.7	CLNC DEL 133.1	ST. LOUIS CLNC DEL 121.7 (when tower closed)	UNICOM 122.95
----------------------	---	---	-------------------------	--------------------------	---	-------------------------



ELEV 463	D	TDZE 462
----------	----------	----------



					
CATEGORY	A	B	C	D	
LPV DA*	662/24 200 (200-½)				
LNAV/VNAV DA	916/45 454 (500-¾)				
LNAV MDA	920/24 458 (500-½)	920/45 458 (500-¾)			
CIRCLING	1100-1 637 (700-1)	1140-1 677 (700-1)	1180-2 717 (800-2)	1360-3 897 (900-3)	

ST. LOUIS, MISSOURI

Amdt 1A 25JAN24

38°40'N-90°39'W

SPIRIT OF ST LOUIS (SUS)

RNAV (GPS) RWY 26L

NC-3, 10 JUL 2025 to 07 AUG 2025

NC-3, 10 JUL 2025 to 07 AUG 2025