

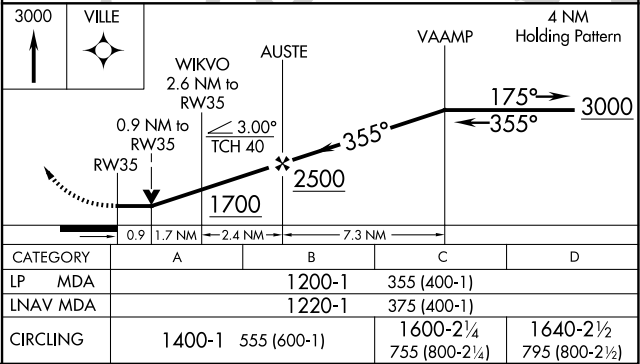
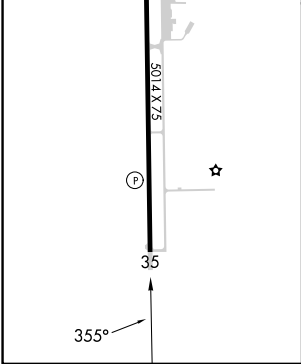
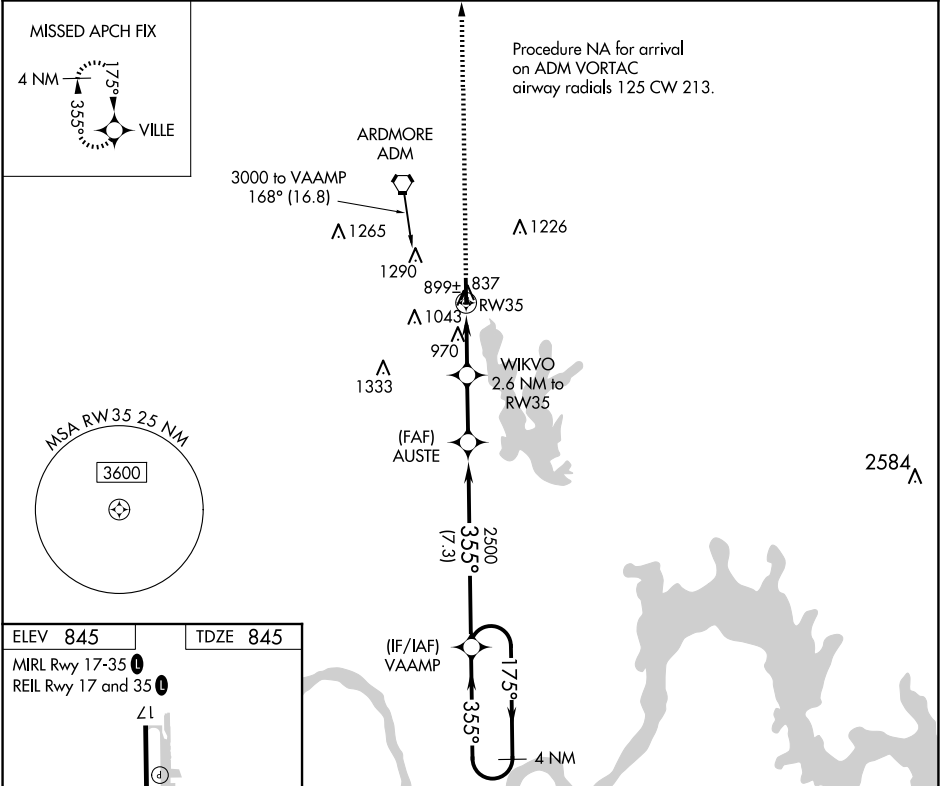
WAAS CH 62921 W35A	APP CRS 355°	Rwy Idg 5014 TDZE 845 Apt Elev 845
--	------------------------	---

RNAV (GPS) RWY 35
ARDMORE DOWNTOWN EXEC (1F)(J)

RNP APCH-GPS.

<div><div></div><div></div></div> <p>Rwy 35 helicopter visibility reduction below ¾ SM NA.</p>	MISSED APPROACH: Climb to 3000 direct VILLE and hold.
--	--

AWOS-3 118.15	FORT WORTH CENTER 124.75 323.0	UNICOM 122.7 (CTAF) 0
-------------------------	--	---------------------------------



SC-1, 10 JUL 2025 to 07 AUG 2025

SC-1, 10 JUL 2025 to 07 AUG 2025