

WAAS CH 48921 W17A	APP CRS 175°	Rwy Idg TDZE 840 Apt Elev 845	5014 840 845
--	------------------------	---	---

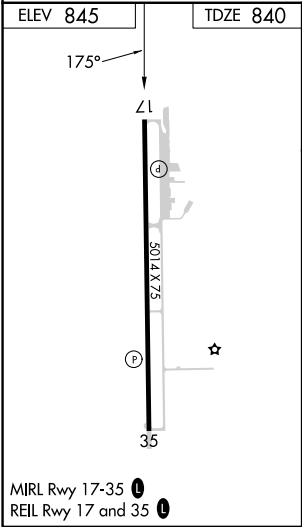
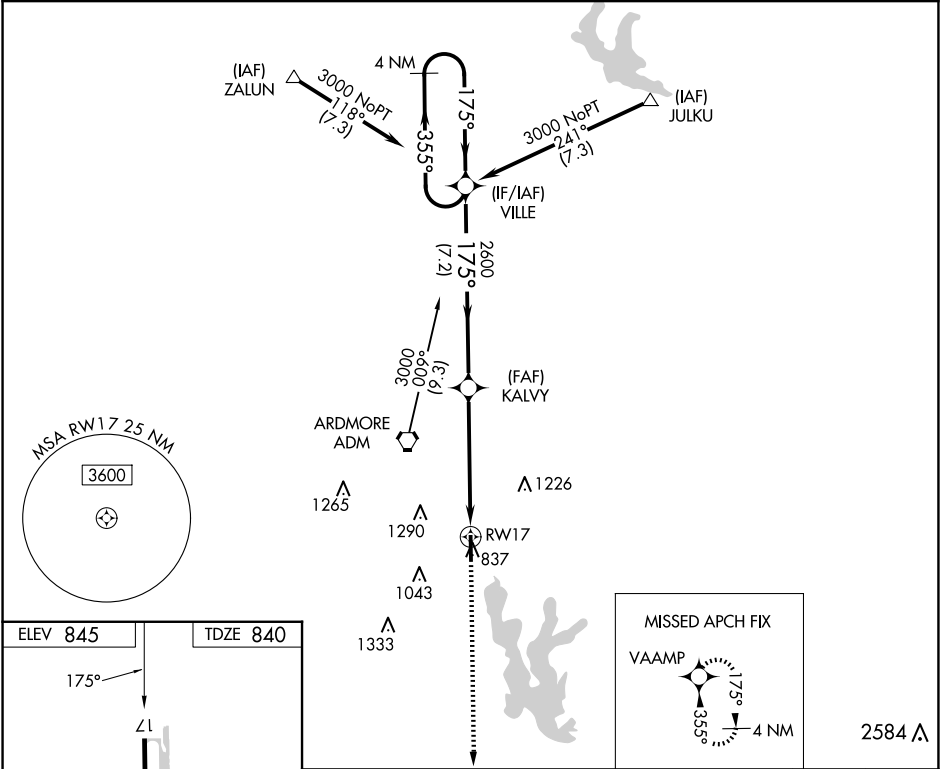
RNAV (GPS) RWY 17
ARDMORE DOWNTOWN EXEC (1F0)

RNP APCH-GPS.

Rwy 17 helicopter visibility reduction below 1 SM NA.

MISSED APPROACH: Climb to 3000
direct VAAMP and hold.

AWOS-3 118.15	FORT WORTH CENTER 124.75 323.0	UNICOM 122.7 (CTAF) 0
-------------------------	--	---------------------------------



Visual Segment - Obstacles.				3000	VAAMP
4 NM Holding Pattern				↑	✧
VILLE				3000	✧
KALVY				2600	✧
RWY 17				7.2 NM	5.3 NM
CATEGORY	A	B	C	D	
LP MDA	1360-1	520 (600-1)	1360-1½	520 (600-1½)	
LNAV MDA	1360-1	520 (600-1)	1360-1½	520 (600-1½)	
CIRCLING	1400-1	555 (600-1)	1600-2¼ 755 (800-2¼)	1640-2½ 795 (800-2½)	

SC-1, 10 JUL 2025 to 07 AUG 2025

SC-1, 10 JUL 2025 to 07 AUG 2025