

TIFTON, GEORGIA

AL-5398 (FAA)

23334

WAAS CH 61118 W34A	APP CRS 332°	Rwy Idg TDZE Apt Elev	6506 354 355
--	------------------------	-----------------------------	---

RNAV (GPS) RWY 34

HENRY TIFT MYERS (TMA)

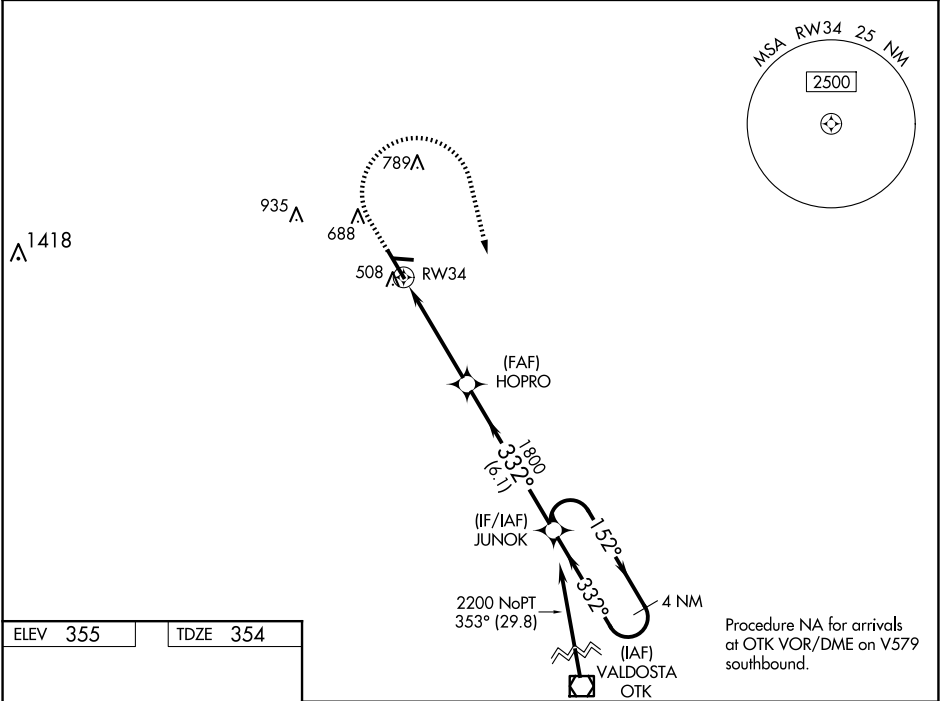
⚠

For uncompensated Baro-VNAV systems, LNAV/VNAV NA below -15°C (5°F) or above 54°C (130°F).
DME/DME RNP-0.3 NA. Circling Rwy 10 NA at night.
Rwy 34 helicopter visibility reduction below ¾ SM NA.

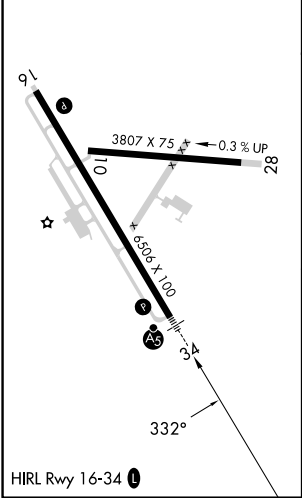
MALSR

MISSED APPROACH: Climb to 900 then climbing right turn to 2200 direct JUNOK and hold.

AWOS-3PT 118.525	VALDOSTA APP CON★ 126.6 285.6	UNICOM 122.7 (CTAF) 0
----------------------------	---	---------------------------------



ELEV 355	TDZE 354
----------	----------



900		2200		JUNOK		4 NM Holding Pattern			
* LNAV only									
CATEGORY		A		B		C		D	
LPV DA				638-¾ 284 (300-¾)					
LNAV/ VNAV DA				684-¾ 330 (400-¾)					
LNAV MDA				780-¾ 426 (500-¾)					
CIRCLING		920-1 565 (600-1)		1060-1 705 (800-1)		1060-2 705 (800-1)		1240-3 885 (900-3)	

TIFTON, GEORGIA
Amdt 1A 17AUG17

31°26'N-83°29'W

HENRY TIFT MYERS (TMA)

RNAV (GPS) RWY 34

SE-4, 10 JUL 2025 to 07 AUG 2025

SE-4, 10 JUL 2025 to 07 AUG 2025