

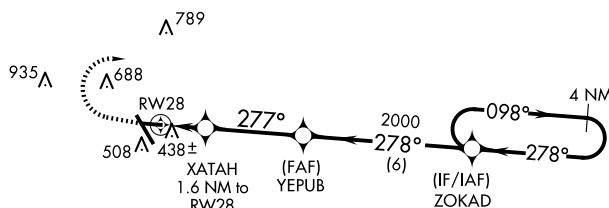
WAAS CH 53339 W28A	APP CRS 277°	Rwy Idg 3807 TDZE 350 Apt Elev 355
--	------------------------	---

RNAV (GPS) RWY 28
HENRY TIFT MYERS (TMA)

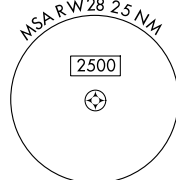
▼ For uncompensated Baro-VNAV systems, LNAV/VNAV NA below -15°C (5°F) or above 54°C (130°F). Baro-VNAV and VDP NA when using Moultrie altimeter setting. DME/DME RNP-0.3 NA. When local altimeter setting not received, use Moultrie altimeter setting; increase LPV DA to 673 feet and LNAV/VNAV DA to 689 feet and all MDA 80 feet; increase LPV all Cats and LNAV/VNAV all Cats visibility $\frac{1}{2}$ mile, LNAV Cat C/D visibility $\frac{1}{4}$ mile, and increase Circling Cat C visibility $\frac{1}{4}$ mile. Straight-in minimums NA at Circling Rwy 10 NA at night. Helicopter visibility reduction below $\frac{3}{4}$ SM NA.

MISSED APPROACH: Climb to 800 then climbing right turn to 2000 direct ZOKAD and hold.

AWOS-3PT 118.525	VALDOSTA APP CON ★ 126.6 285.6	UNICOM 122.7 (CTAF) 0
----------------------------	--	---------------------------------



Procedure NA for arrivals at OTK
VOR/DME on V579 southbound.



800
↑

2000
↗

ZOKAD
✦

*LNAV only.

XATAH
1.6 NM to RW28

RW28
↓

*1.1 NM to RW28

YEPUB
2000

*880

277°

278°

098°

278°

2000

GP 3.00°
TCH 40

1.1

0.5 NM

3.5 NM

6 NM

CATEGORY	A	B	C	D
LPV DA		604-1	254 (300-1)	
LNAV/VNAV DA		628-1	278 (300-1)	
LNAV MDA		720-1	370 (400-1)	
C CIRCLING	920-1 565 (600-1)	1060-1 705 (800-1)	1060-2 705 (800-2)	1240-3 885 (900-3)

