

WAAS CH 62839 W16A	APP CRS 152°	Rwy Idg TDZE Apt Elev	6506 355 355
--	------------------------	-----------------------------	---

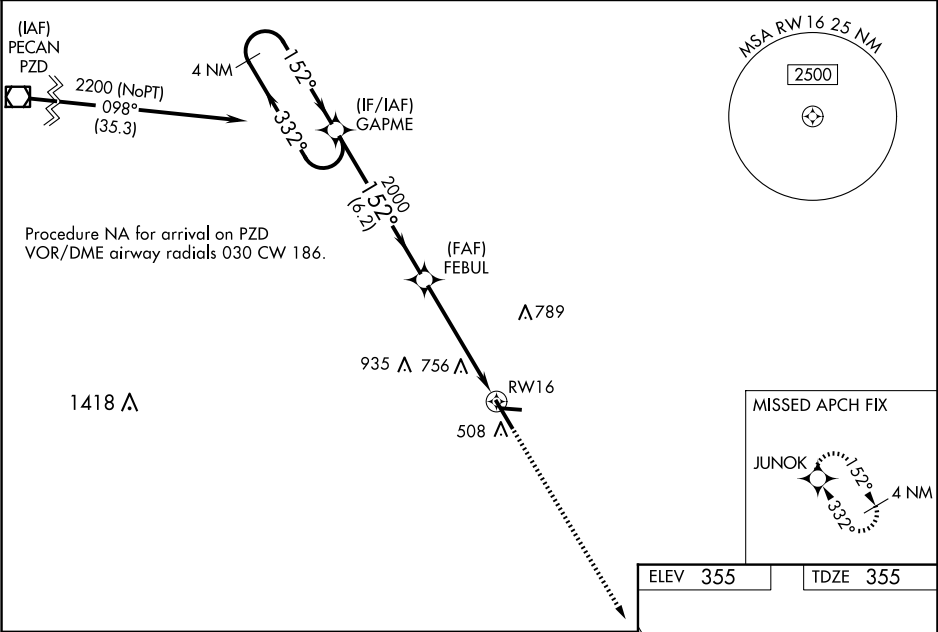
RNAV (GPS) RWY 16

HENRY TIFT MYERS (TMA)

For uncompensated Baro-VNAV systems, LNAV/VNAV NA below -1.5°C (5°F) or above 54°C (130°F). Circling Rwy 10 NA at night. DME/DME RNP-0.3 NA.
Rwy 16 Helicopter visibility reduction below ¾ SM NA.

MISSED APPROACH:
Climb to 2200 direct JUNOK and hold.

AWOS-3PT 118.525	VALDOSTA APP CON★ 126.6 285.6	UNICOM 122.7 (CTAF) 0
----------------------------	---	---------------------------------



4 NM Holding Pattern

2200 ← 332°

152° →

152°

2000

2000

6.2 NM

3 NM

2 NM

GP 3.00°

TCH 46

GAPME

FEBUL

2000

* 2 NM to RW16

RW16

2200

JUNOK

* LNAV only

CATEGORY	A	B	C	D
LPV DA		621-7 ⁸	266 (300-7 ⁸)	
LNAV/VNAV DA		1100-3	745 (800-3)	
LNAV MDA	1020-1	665 (700-1)	1020-17 ⁸	665 (700-1 ⁸)
CIRCLING	1020-1 665 (700-1)	1060-1 705 (800-1)	1060-2 705 (800-2)	1240-3 885 (900-3)

HIRL Rwy 16-34 0