

LOC/DME I-TMA 109.7 Chan 34	APP CRS 332°	Rwy Idg 6506 TDZE 354 Apt Elev 355
---	------------------------	---

ILS or LOC RWY 34

HENRY TIFT MYERS (TMA)

DME required.

T Circling Rwy 10 NA at night. Rwy 34 helicopter visibility
A NA reduction below $\frac{3}{4}$ SM NA. For inop ALS, increase S-ILS 34
visibility all Cats to $\frac{7}{8}$ SM and increase S-LOC 34 visibility all
Cats to 1 SM.

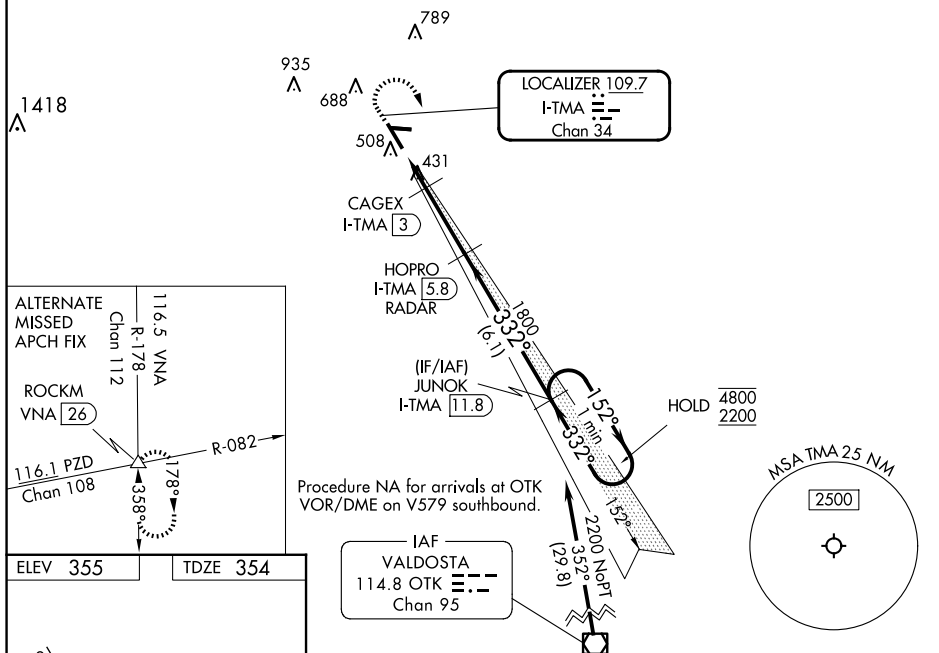
MALSR



MISSED APPROACH: Climb to 900 then climbing right turn to 2200 on heading 130° and OTK VOR/DME R-352 to JUNOK/I-TMA 11.8 DME and hold.

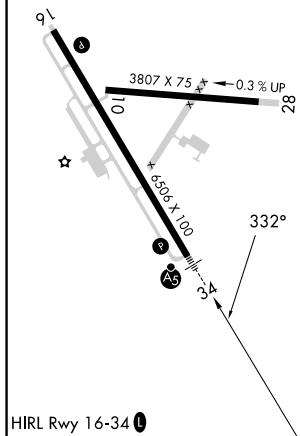
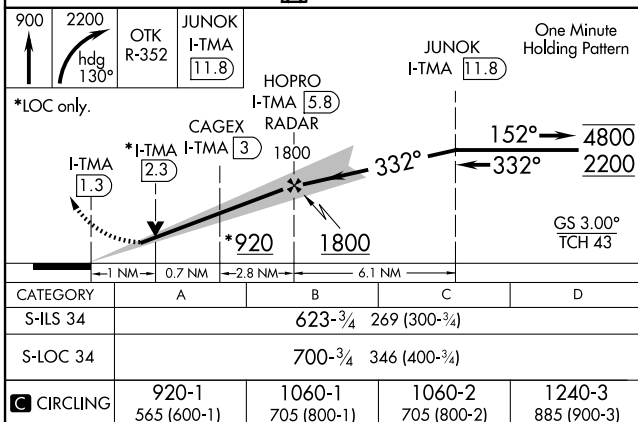
AWOS-3PT
118.525

VALDOSTA APP CON ★
126.6 285.6

UNICOM
122.7 (CTAF) **L**

ELEV 355

TDZE 354

HIRL Rwy 16-34 **L**

CATEGORY	A	B	C	D
S-ILS 34		623-3/4	269 (300-3/4)	
S-LOC 34		700-3/4	346 (400-3/4)	
C CIRCLING	920-1 565 (600-1)	1060-1 705 (800-1)	1060-2 705 (800-2)	1240-3 885 (900-3)