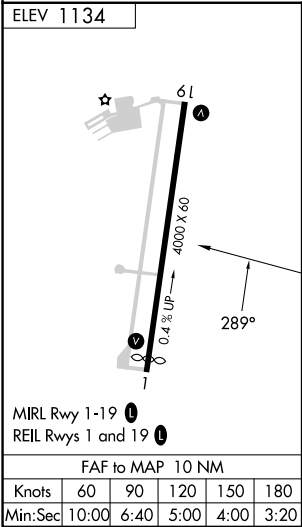
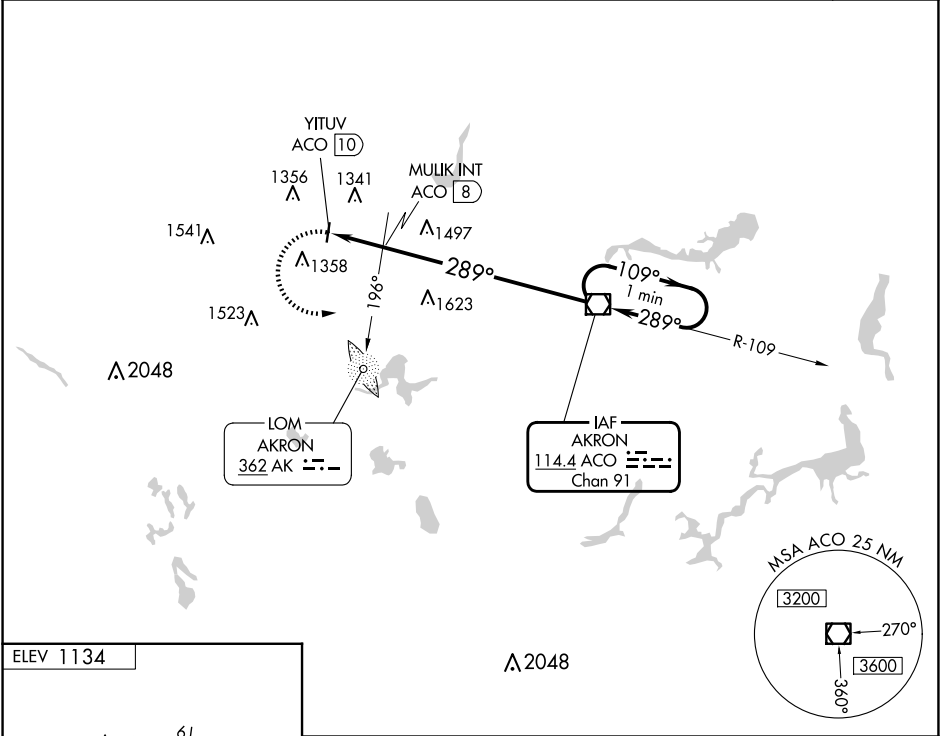


VOR/DME ACO	APP CRS	Rwy Idg	N/A
114.4	289°	TDZE	N/A
Chan 91		Apt Elev	1134

VOR-A

KENT STATE UNIVERSITY (1G3)

<div><div><div>▼</div><div>▲ NA</div></div><div>When local altimeter setting not received, use Akron Fulton Intl altimeter setting.</div></div>		MISSED APPROACH: Climbing left turn to 3000 direct ACO VOR/DME and hold.			
AWOS-2 119.15	AKR ASOS 126.825	CLEVELAND APP CON ★ 125.5 371.875	CLNC DEL 125.65	UNICOM 122.725 (CTAF)	122.9 0



3000 ACO		One Minute Holding Pattern			
		ACO VOR/DME			
		MULIK INT ACO 8			
		YITUV ACO 10			
		2020			
		2 NM 8 NM			
CATEGORY	A	B	C	D	
CIRCLING	2020-1¼	886 (900-1¼)	2020-2¾	886 (900-2¾)	NA
MULIK FIX MINIMUMS (ADF OR DME REQUIRED)					
CIRCLING	1760-1	626 (700-1)	1760-1¾	626 (700-1¾)	NA