


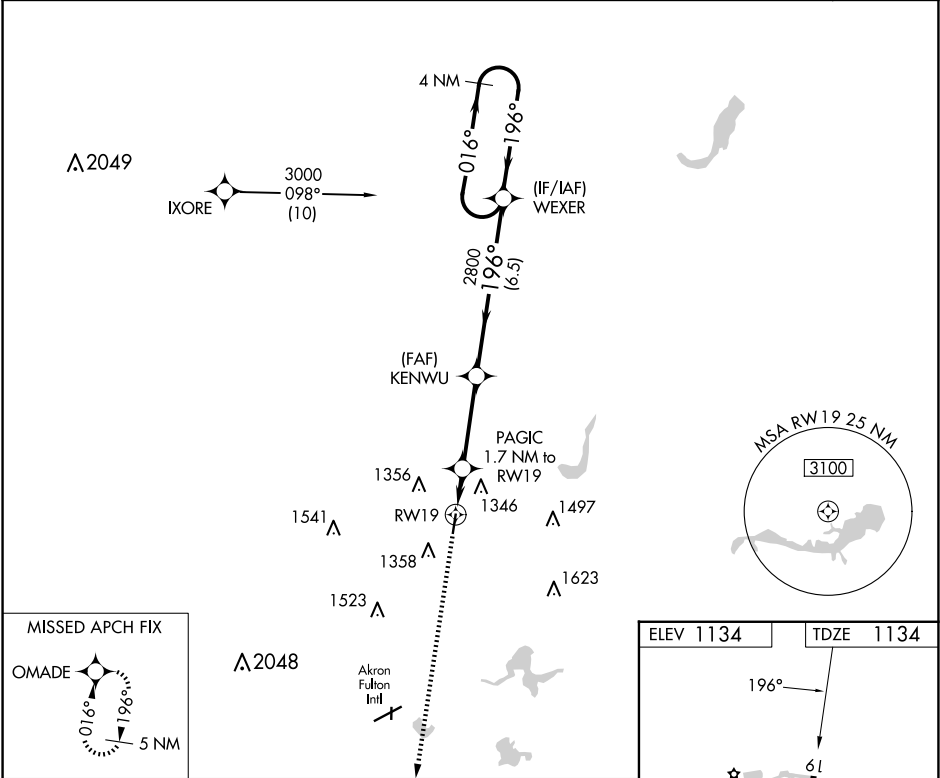
WAAS CH 65701 W19A	APP CRS 196°	Rwy Idg 4000 TDZE 1134 Apt Elev 1134
--	------------------------	---



RNAV (GPS) RWY 19

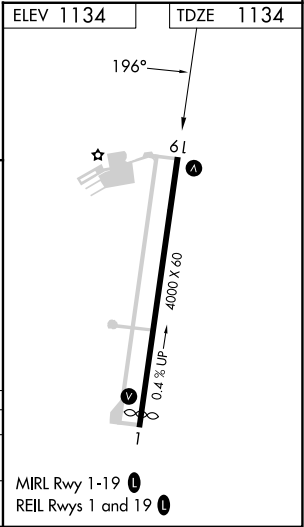
KENT STATE UNIVERSITY (1G3)

RNP APCH - GPS.		MISSED APPROACH: Climb to 3000 direct OMADE and hold.
 NA	Rwy 19 helicopter visibility reduction below 3/4 SM NA. When local altimeter setting not received, use Akron Fulton Intl altimeter setting.	

AWOS-2 119.15	AKR ASOS 126.825	CLEVELAND APP CON ★ 125.5 371.875	CLNC DEL 125.65	UNICOM 122.725 (CTAF)	122.90
-------------------------	----------------------------	---	---------------------------	---------------------------------	---------------



3000 		VGSI and RNAV glidepath not coincident (VGSI Angle 3.00/TCH 35).	
		WEXER 4 NM Holding Pattern	
*LNAV only.		KENWU	
RW19 1.7 NM		PAGIC 1.7 NM to RW19	
1700*		2800	
1.7 NM		3.3 NM	
3.3 NM		6.5 NM	
CATEGORY	A	B	C
LPV DA	1443-1 309 (400-1)		NA
LNAV MDA	1580-1 446 (500-1)		1580-1 446 (500-1 1/4)



EC-2, 10 JUL 2025 to 07 AUG 2025

EC-2, 10 JUL 2025 to 07 AUG 2025