

RENTON, WASHINGTON

AL-5396 (FAA)

25163

WAAS CH 93610 W16A	APP CRS 157°	Rwy Ldg 4742 TDZE 26 Apt Elev 32
--	------------------------	---

RNAV (GPS) Z RWY 16

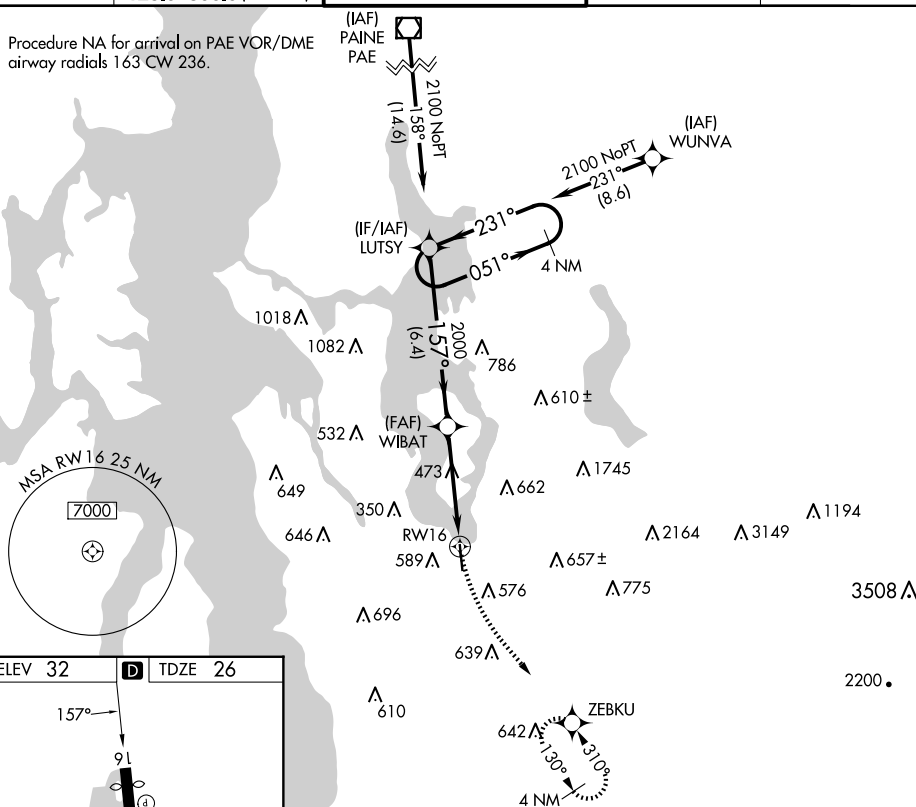
RENTON MUNI (RNT)

T For uncompensated Baro-VNAV systems, LNAV/VNAV NA below -5°C (23°F) or above 48°C (119°F). DME/DME RNP-0.3 NA. Rwy 16 helicopter visibility reduction below $\frac{3}{4}$ SM NA.

MISSED APPROACH: Climbing left turn to 2400 direct ZEBKU and hold.

ATIS 126.95	SEATTLE APP CON 123.9 338.2 (RWY 16) 125.9 306.9 (RWY 34)	RENTON TOWER* 124.7 (CTAF) 0 256.9	GND CON 121.6 256.9	UNICOM 122.95
-----------------------	---	---	-------------------------------	-------------------------

Procedure NA for arrival on PAE VOR/DME
airway radials 163 CW 236.



4 NM Holding Pattern

LUTSY

WIBAT

2100

051°

231°

157°

2000

6.4 NM

4.3 NM

2400

ZEBKU

GP 4.20° TCH 50

RW16

VGS1 and RNAV glidepath not coincident (VGS1 Angle 3.50/TCH 58).

RENTON, WASHINGTON
Amdt 3 17AUG17

47°30'N-122°13'W

RENTON MUNI (RNT)
RNAV (GPS) Z RWY 16

NW-1, 10 JUL 2025 to 07 AUG 2025

NW-1, 10 JUL 2025 to 07 AUG 2025