

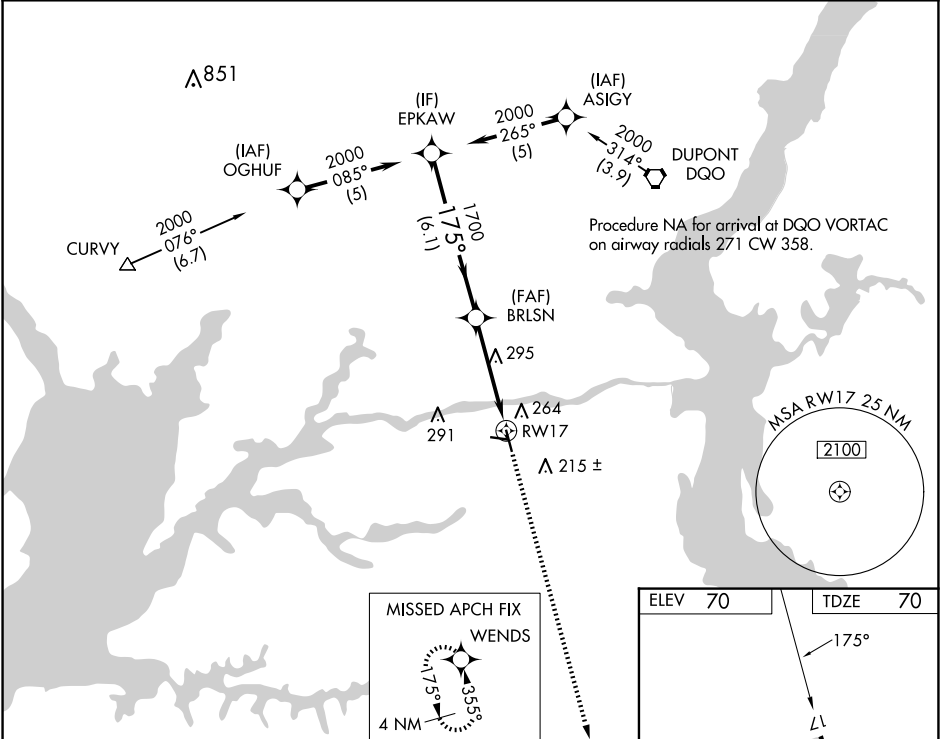
WAAS CH <b>49002</b> <b>W17A</b>	APP CRS <b>175°</b>	Rwy Idg TDZE Apt Elev <b>70</b> <b>70</b>	<b>4488</b>
--	------------------------	---	-------------

RNAV (GPS) RWY 17

SUMMIT (EVY)

RNP APCH - GPS.		MISSED APPROACH: Climb to 2000 direct WENDS and hold.
<div><div>▼</div><div>▲</div></div>	<div>Procedure NA at night. Rwy 17 helicopter visibility reduction below 1 SM NA.</div> <div>For uncompensated Baro-VNAV systems, LNAV/VNAV NA below -15°C or above 54°C.</div>	

AWOS-3 <b>132.325</b>	PHILADELPHIA APP CON <b>118.35 323.1</b>	UNICOM <b>122.725</b> (CTAF)	<b>123.5</b>
--------------------------	---	---------------------------------	--------------



EPKAW		VGSi and RNAV glidepath not coincident (VGSi Angle 3.00/TCH 41).		2000	WENDS
GP 3.53° TCH 56		BRLSN		1700	RW17
175°		1700		6.1 NM	
1700		4.2 NM			
CATEGORY	A	B	C	D	
LPV DA	541-1 <sup>3</sup> / <sub>8</sub> 471 (500-1 <sup>3</sup> / <sub>8</sub> )			NA	
LNNAV/ VNAV DA	619-1 <sup>5</sup> / <sub>8</sub> 549 (600-1 <sup>5</sup> / <sub>8</sub> )			NA	
LNNAV MDA	560-1 490 (500-1)		560-1 <sup>3</sup> / <sub>8</sub> 490 (500-1 <sup>3</sup> / <sub>8</sub> )	NA	