

PERRYTON, TEXAS

AL-5391 (FAA)

22251

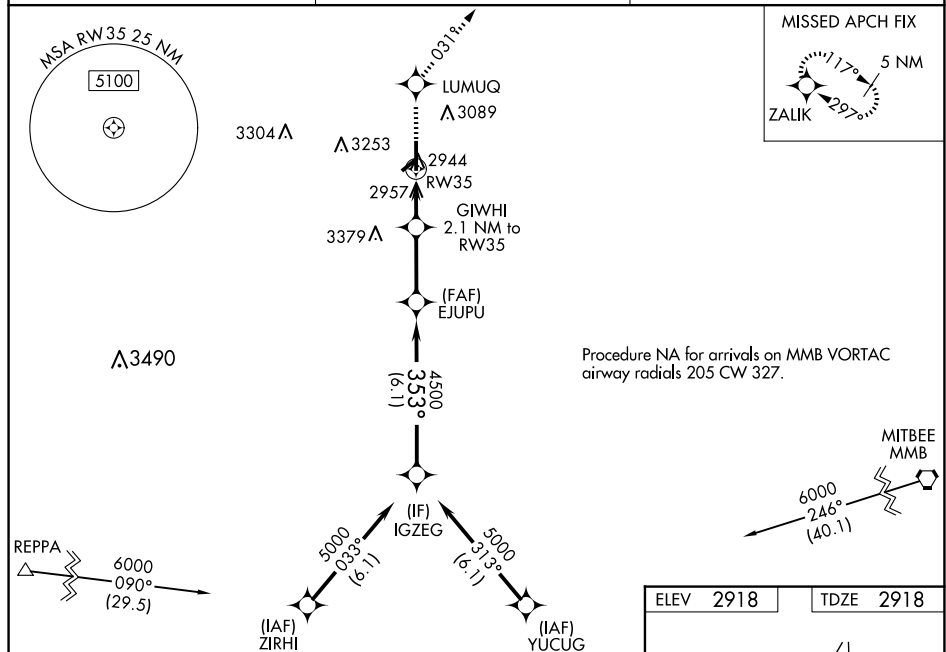
|  |                        |   |
|--|------------------------|---|
| WAAS<br>CH <b>77633</b><br><b>W35A</b> | APP CRS<br><b>353°</b> | Rwy Idg <b>5701</b><br>TDZE <b>2918</b><br>Apt Elev <b>2918</b> |
|--|------------------------|---|

RNAV (GPS) RWY 35  
PERRYTON OCHILTREE COUNTY (PYX)

**T** Baro-VNAV and VDP NA when using Gage altimeter setting. For uncompensated Baro-VNAV systems, LNAV/VNAV NA below -20°C (-4°F) or above 54°C (130°F). **A** When local altimeter setting not received, use Gage altimeter setting and increase all DAs 208 feet and MDA 220 feet; increase LPV and LNAV/VNAV Cats A and B visibility  $\frac{3}{4}$  miles and Circling Cat B visibility  $\frac{1}{4}$  mile. DME/DME RNP -0.3 NA. Helicopter visibility reduction below  $\frac{3}{4}$  SM NA. Circling NA to Rwy 4 and 22.

**MISSED APPROACH:** Climb to 6000 direct LUMUQ and on track 031° to ZALJK and hold.

|                          |   |  |
|--------------------------|---|--|
| AWOS-3<br><b>118.175</b> | KANSAS CITY CENTER<br><b>126.95 379.2</b> | UNICOM<br><b>122.8</b> (CTAF) <b>0</b> |
|--------------------------|---|--|

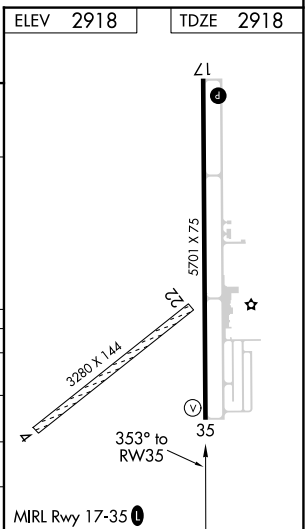


VGSI and RNAV glidepath not coincident (VGSI Angle 3.50/TCH 23).

IGZEG 5000 3.50  
EJUPU 1500

6000 LUMUQ tr 031° ZALIK  
GWHI \*RNAV only.

| CATEGORY          | A                     | B                     | C  | D |
|-------------------|-----------------------|-----------------------|----|---|
| LPV DA            | 3168-7/8              | 250 (300-7/8)         | NA |   |
| RNAV/<br>VNAV DA  | 3168-7/8              | 250 (300-7/8)         | NA |   |
| RNAV MDA          | 3320-1                | 402 (500-1)           | NA |   |
| <b>C</b> CIRCLING | 3320-1<br>402 (500-1) | 3580-1<br>662 (700-1) | NA |   |



SC-2, 10 JUL 2025 to 07 AUG 2025

SC-2, 10 JUL 2025 to 07 AUG 2025

PERRYTON, TEXAS  
Amdt 1B 13OCT16

36°25'N-100°45'W

PERRYTON OCHILTREE COUNTY (PYX)  
RNAV (GPS) RWY 35