

APP CRS
076°

Rwy Ldg
TDZE
Apt Elev

2247
523
523

RNAV (GPS) RWY 8

RANDALL (Ø6N)

RNP APCH.

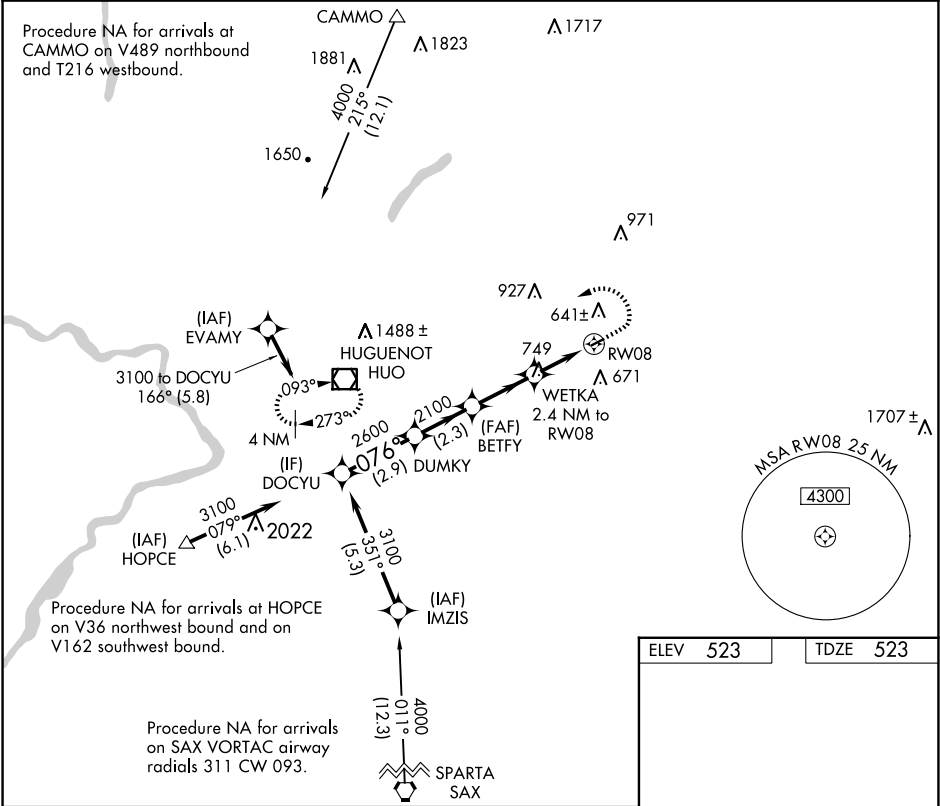
▼
NA

Procedure NA at night. Use Newburgh altimeter setting, when not received, use Montgomery altimeter setting.
Rwy 8 helicopter visibility reduction below 1 SM NA.

MISSED APPROACH: Climb to 1200 then climbing left turn to 3500 direct HUO VOR/DME and hold, continue climb-in-hold to 3500.

NEW YORK APP CON
132.75 363.1

UNICOM
122.8 (CTAF) 0



DOCYU

Visual Segment - Obstacles.

1200

3500

HUO

CATEGORY	A	B	C	D
LNAV MDA	1140-1 617 (700-1)		NA	
CIRCLING	1140-1 617 (700-1)		NA	

ELEV 523

TDZE 523

MIRL Rwy 8-26 0