

WAAS

CH **40030**

**W26A**

APP CRS

**256°**

Rwy Ldg

**2810**

TDZE

**523**

Apt Elev

**523**

RNAV (GPS) RWY 26

RANDALL (Ø6N)

RNP APCH

Procedure NA at night. Rwy 26 helicopter visibility reduction below 1 SM NA.

Use Newburgh altimeter setting; when not received, use Montgomery altimeter setting.

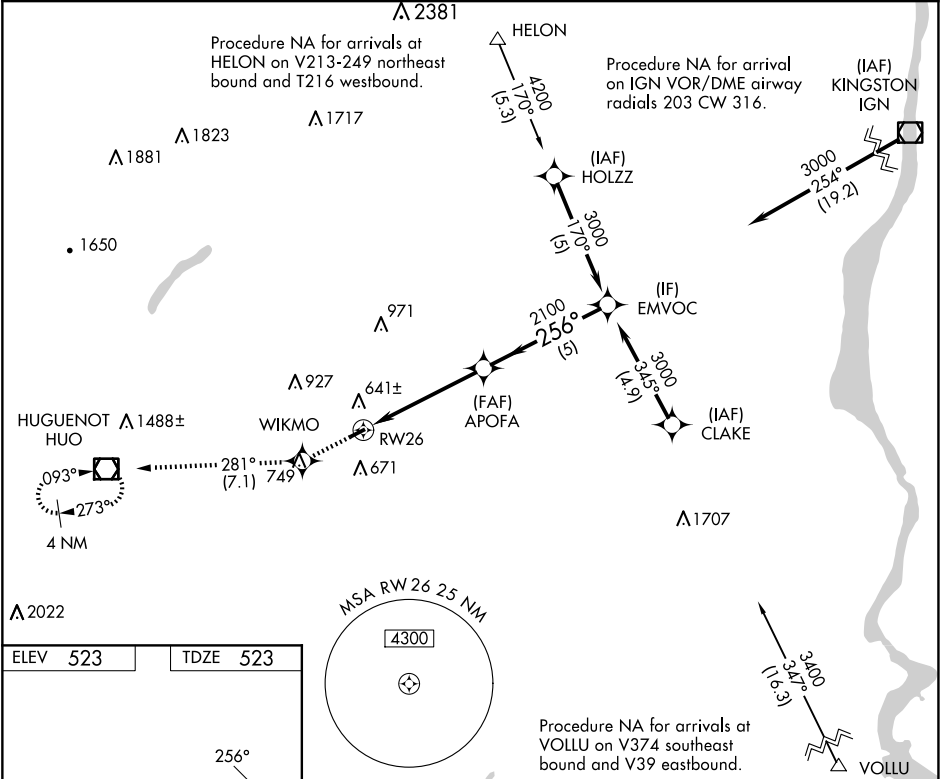
MISSED APPROACH: Climb to 3500 direct WIKMO and on track 281° to HUO VOR/DME and hold, continue climb-in-hold to 3500.

NEW YORK APP CON

**132.75 363.1**

UNICOM

**122.8 (CTAF) 0**



ELEV 523

TDZE 523

3500

WIKMO

tr 281°

HUO

Visual Segment - Obstacles.

EMVOC

RWY 26

4.9 NM

5 NM

CATEGORY

A

B

C

D

LP MDA

1020-1

497 (500-1)

NA

LNAV MDA

1060-1

537 (600-1)

NA

CIRCLING

1080-1

557 (600-1)

NA

MIRL Rwy 8-26 0