

23334

ILS or LOC RWY 25
WHITESIDE COUNTY/JOS H BITTORF FLD (SQI)

MISSED APPROACH: Climbing right turn to 3000 on CVA
VORTAC R-069 to VOSUY/CVA 47.1 DME and hold.

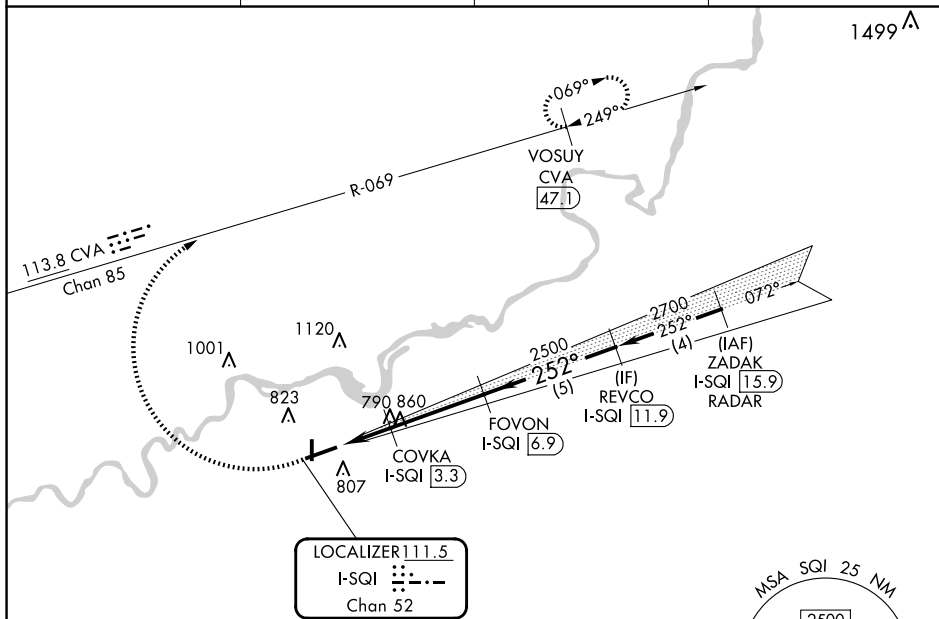
T
A NA

AWOS-3PT
119.175

ROCKFORD APP CON
126.0 327.0

CLNC DEL
128.0

UNICOM
123.0 (CTAF) **L**



EC-3, 10 JUL 2025 to 07 AUG 2025

ELEV 648

TDZE 647

81

3900 X 100

701

7

36

6499 X 150

252°

25

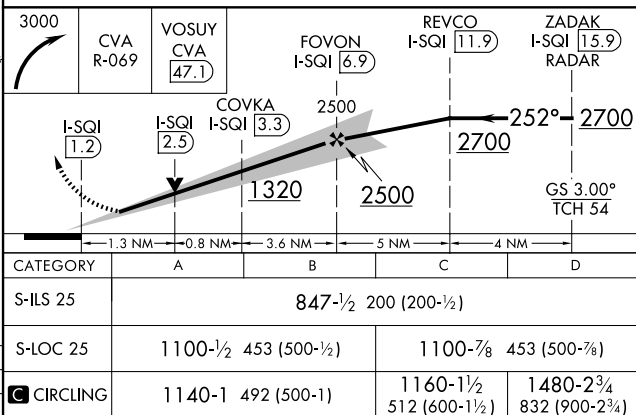
45

HIRL Rwy 7-25

MIRL Rwy 18-36

REIL Rwy 7, 18 and 36

FAF to MAP 5.7 NM					
Knots	60	90	120	150	180
Min:Sec	5:42	3:48	2:51	2:17	1:54



WHITE
41°45'N-89°41'W

WHITESIDE COUNTY/JOS H BITTORF FLD (SQI)
89°41'W ILS or LOC RWY 25