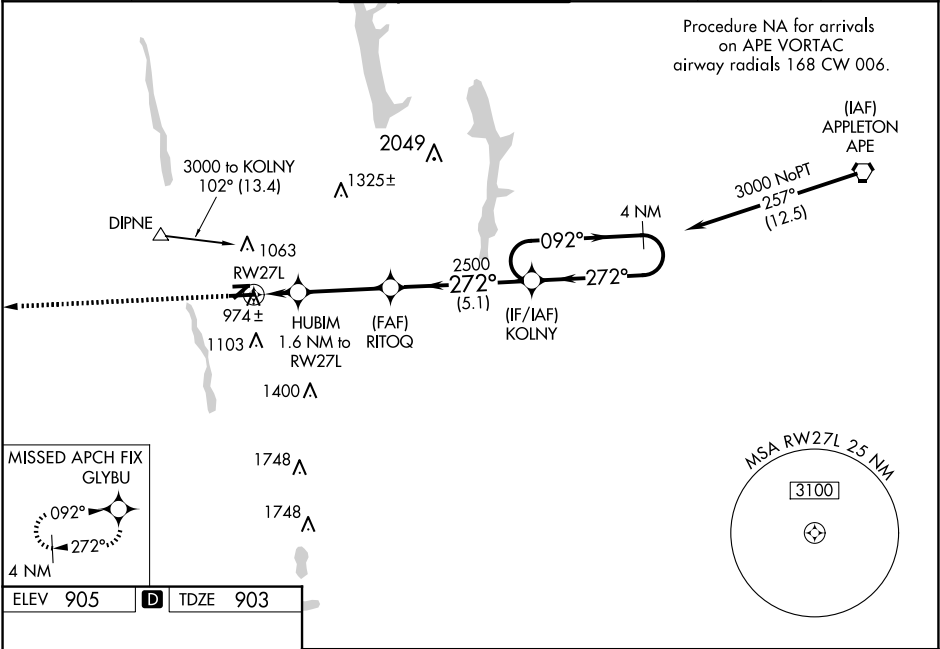


WAAS CH 45720 W27A	APP CRS 272°	Rwy Idg TDZE Apt Elev	5004 903 905
--	------------------------	-----------------------------	---

RNAV (GPS) RWY 27L
OHIO STATE UNIVERSITY (OSU)

RNP APCH.	Baro-VNAV NA when using John Glenn Columbus Intl altimeter setting. For uncompensated Baro-VNAV systems, LNAV/VNAV NA below -16°C or above 38°C. When local altimeter setting not received, use John Glenn Columbus Intl altimeter setting; increase LPV DA to 1178 feet; increase LNAV/VNAV DA to 1224 feet and all visibilities ½ SM; increase all MDAs 40 feet and visibility LNAV Cat C ¼ SM and Cat D ¼ SM, and Circling Cat D ¼ SM. Circling Rwy 23 NA at night. Rwy 27L helicopter visibility reduction below ¾ SM NA.	MISSED APPROACH: Climb to 3200 direct GLYBU and hold.
-----------	---	--

ATIS 121.35	COLUMBUS APP CON 125.95 317.775	STATE TOWER ★ 118.8 (CTAF) 0 254.325	GND CON 121.7	CLNC DEL 121.7	UNICOM 122.95
-----------------------	---	--	-------------------------	--------------------------	-------------------------



REIL Rwy 27L
HIRL Rwy 9R-27L
MIRL Rwy 9L-27R

3200
GLYBU

VGSI and RNAV glidepath not coincident (VGSI Angle 3.00/TCH 28)

4 NM Holding Pattern

* LNAV only.

HUBIM 1.6 NM to RW27L

RITOQ 2500

KOLNY 3000

RW27L

* 1420

2500

GP 3.00° TCH 45

1.6 NM
3.3 NM
5.1 NM

CATEGORY	A	B	C	D
LPV DA	1153-1 250 (300-1)			
LNAV/VNAV DA	1199-1 296 (300-1)			
LNAV MDA	1280-1	377 (400-1)	1280-1½ 377 (400-1½)	
CIRCLING	1380-1 475 (500-1)	1420-1 515 (600-1)	1420-1½ 515 (600-1½)	1680-2½ 775 (800-2½)

EC-2, 10 JUL 2025 to 07 AUG 2025

EC-2, 10 JUL 2025 to 07 AUG 2025