
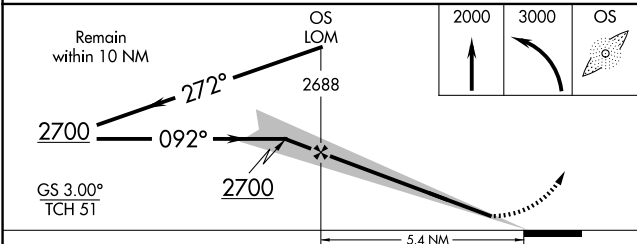
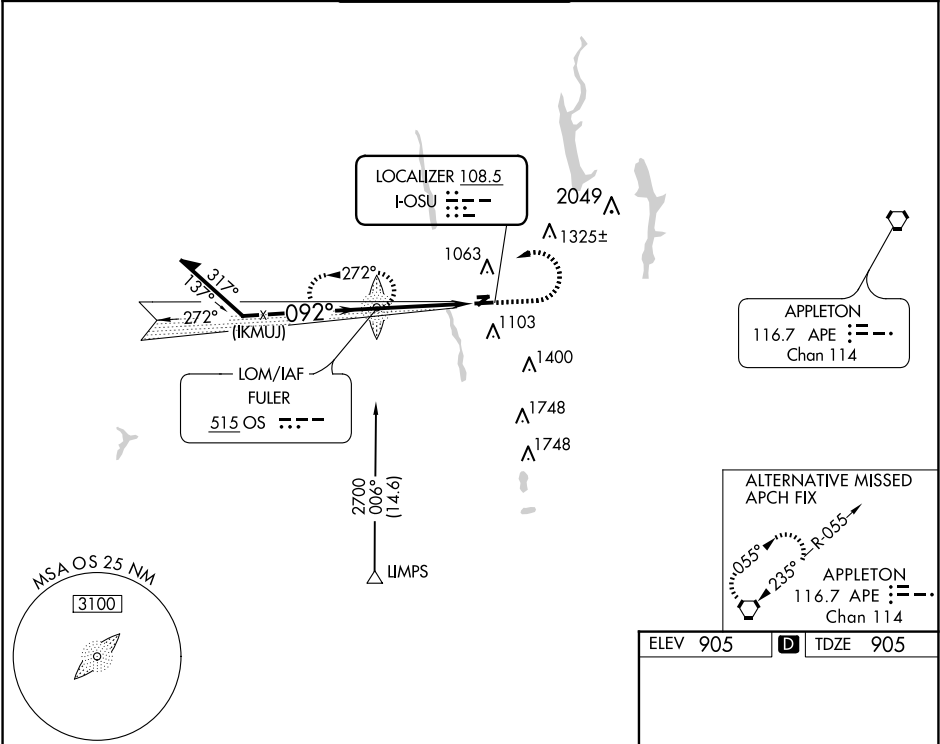


LOC I-OSU <b>108.5</b>	APP CRS <b>092°</b>	Rwy Idg TDZE Apt Elev	<b>5004</b> <b>905</b> <b>905</b>
---------------------------	------------------------	-----------------------------	---

ILS or LOC RWY 9R

OHIO STATE UNIVERSITY (OSU)

ADF required for procedure entry. ADF required.				<div>MALSR</div> <div></div>		MISSED APPROACH: Climb to 2000 then climbing left turn to 3000 direct FULER LOM and hold.	
When local altimeter setting not received, use John Glenn Columbus Intl altimeter setting; increase DA to 1140 feet; increase all MDAs 40 feet and S-9R visibility Cat C ½ SM and Cat D and Circling Cat D ¼ SM. Circling Rwy 23 NA at night.							
<div>▼</div> <div>▲</div> <div>ATIS</div> <div>121.35</div>	COLUMBUS APP CON		STATE TOWER ★		GND CON	CLNC DEL	UNICOM
	125.95 317.775		118.8 (CTAF) 254.325		121.7	121.7	122.95



CATEGORY	A	B	C	D
S-ILS 9R	1105-½ 200 (200-½)			
S-LOC 9R	1420-½	515 (600-½)	1420-1	515 (600-1)
CIRCLING	1420-1	515 (600-1)	1420-1½ 515 (600-1½)	1680-2½ 775 (800-2½)

