

LOC/DME I-LWR
110.7
Chan **44**

APP CRS
180°

Rwy Idg
TDZE **213**
Apt Elev **213**

ILS or LOC RWY 17
WEST MEMPHIS MUNI (A W M)

DME or RADAR required.

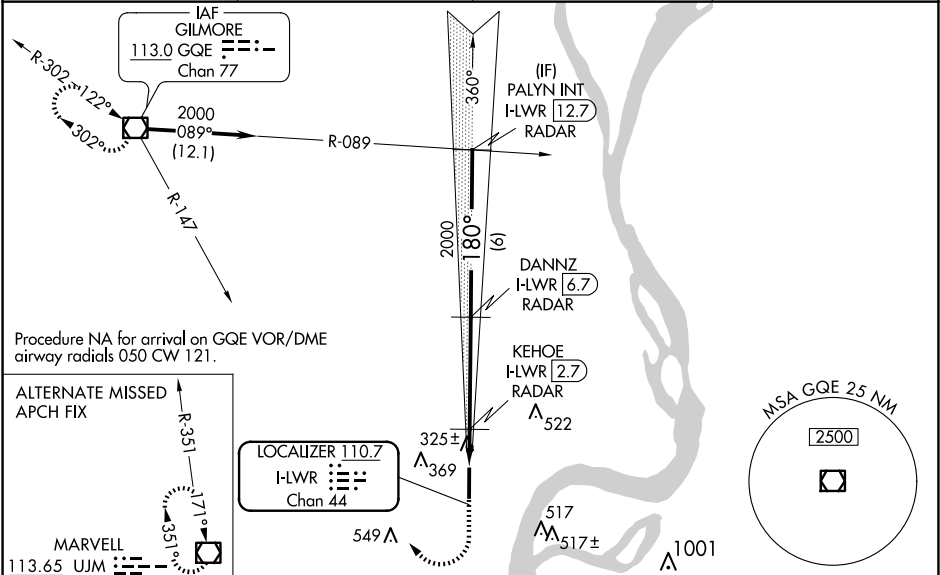
MALSR

NA

For inop ALS, increase S-LOC 17 Cat C/D visibility to 1½ SM and KEHOE FIX MINIMUMS S-LOC 17 Cats C/D visibility to 1 SM.

MISSED APPROACH: Climb to 1000 then climbing right turn to 2000 on GQE VOR/DME R-147 to GQE VOR/DME and hold.

ASOS 118.175	MEMPHIS APP CON 119.1 291.6	CLNC DEL 121.7	UNICOM 123.05 (CTAF) 0
------------------------	---------------------------------------	--------------------------	---



	ELEV 213	TDZE 213
	1000	2000
	GQE	GQE R-147
*LOC only.		
	I-LWR 1.3	KEHOE I-LWR 2.7 RADAR
	180°	180°
	680*	2000
	1.4 NM	4 NM
		6 NM
		GS 3.00° TCH 51
CATEGORY	A	B
S-ILS 17	413-½	200 (200-½)
S-LOC 17	680-½	467 (500-½)
CIRCLING	680-1	740-1
	467 (500-1)	527 (600-1)
		800-1½
		587 (600-1½)
		920-2¼
		707 (800-2¼)
		KEHOE FIX MINIMUMS
S-LOC 17	580-½	367 (400-½)
CIRCLING	640-1	740-1
	427 (500-1)	527 (600-1)
		800-1½
		587 (600-1½)
		920-2¼
		707 (800-2¼)

MIRL Rwy 17-35 **0**

REIL Rwy 35 **0**

FAF to MAP 5.5 NM

Knots	60	90	120	150	180
Min:Sec	5:30	3:40	2:45	2:12	1:50