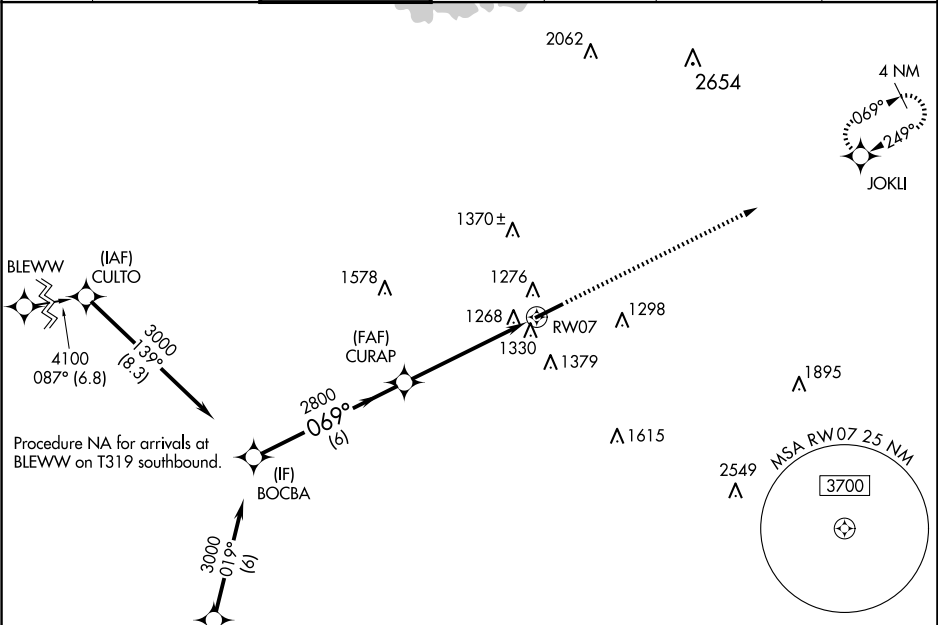


WAAS CH 97621 W07A	APP CRS 069°	Rwy Idg TDZE Apt Elev	6001 1061 1062
--	------------------------	-----------------------------	---

RNAV (GPS) RWY 7

GWINNETT COUNTY/BRISCOE FLD (LZU)

RNP APCH.		MISSED APPROACH: Climb to 3000 direct JOKLI and hold.	
▼ ▲ Rwy 7 helicopter visibility reduction below ¾ NA.			
ATIS 132.275	ATLANTA APP CON 126.975 239.275	GWINNETT TOWER ★ 124.1 (CTAF) 0	GND CON 121.8
		CLNC DEL 121.8	CLNC DEL 134.0 (When twr closed)
		UNICOM 123.05	



ELEV 1062

TDZE 1061

VGSI and descent angles not coincident.
(VGSI Angle 3.00/TCH 41).

3000

JOKLI

BOCBA

3000

069°

CURAP

2800

3.00°

TCH 55

1.3 NM to RW07

RW07

6 NM

4 NM

1.3

CATEGORY	A	B	C	D
LP MDA	1520-1	459 (500-1)	1520-1¾	459 (500-1¾)
LNAV MDA	1580-1	519 (600-1)	1580-1¾	519 (600-1¾)
CIRCLING	1640-1	578 (600-1)	1680-1¾ 618 (700-1¾)	1700-2 638 (700-2)

HIRL Rwy 7-25 0

6001 X 100

TWR

069°

0.5% UP

45