
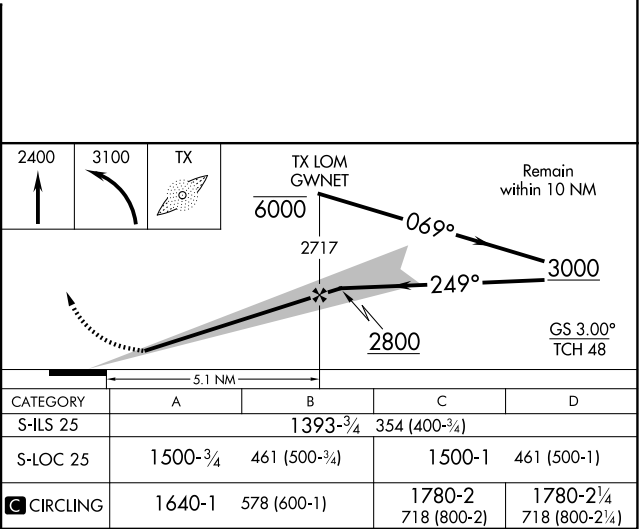
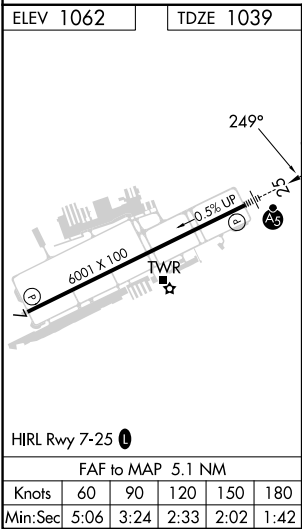
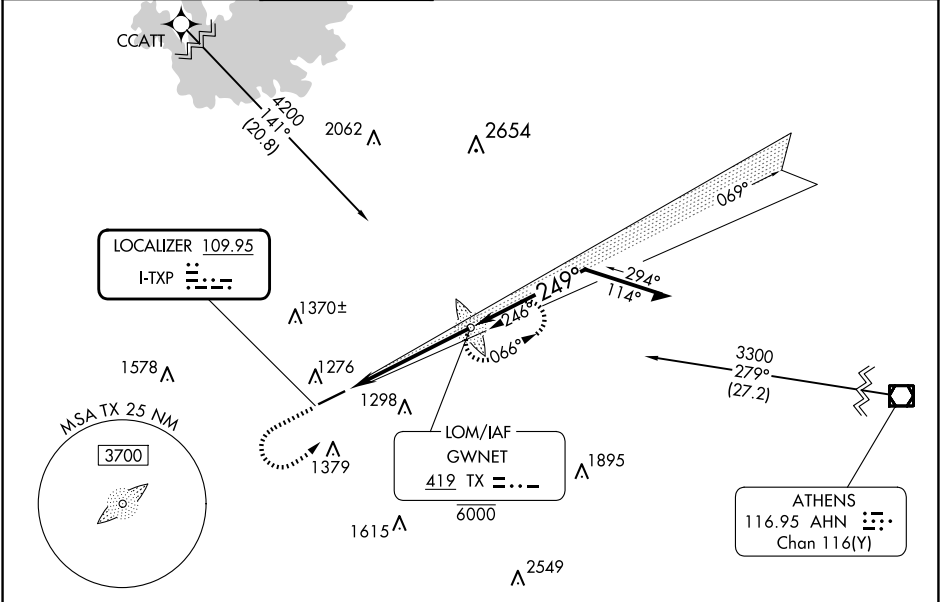


LOC I-TXP 109.95	APP CRS 249°	Rwy Ldg TDZE Apt Elev 6001 1039 1062
----------------------------	------------------------	--

ILS or LOC RWY 25
GWINNETT COUNTY/BRISCOE FLD (LZU)

RNAV 1 - GPS. From CCATT.					MALSR 	MISSED APPROACH: Climb to 2400 then climbing left turn to 3100 direct GWNET LOM and hold.
ADF required.						
<div><div><div>▼</div><div>▲</div></div><div>Inop table does not apply to S-ILS 25. Autopilot coupled approach NA below 1700. Rwy 25 helicopter visibility reduction below ¾ SM NA. Circling Rwy 7 NA at night. For inop ALS, increase S-LOC 25 Cat A/B visibility to 1 SM and Cat C/D visibility to 1½ SM.</div></div>						
ATIS 132.275	ATLANTA APP CON 126.975 239.275	GWINNETT TOWER ★ 124.1 (CTAF) 0	GND CON 121.8	CLNC DEL 121.8	CLNC DEL 134.0 (When twr closed)	UNICOM 123.05



SE-4, 10 JUL 2025 to 07 AUG 2025

SE-4, 10 JUL 2025 to 07 AUG 2025