

WAAS
CH **65807**
W31A

APP CRS
313°

Rwy Idg **3498**
TDZE **827**
Apt Elev **827**

RNAV (GPS) RWY 31

JOHN F KENNEDY MEML (ASX)

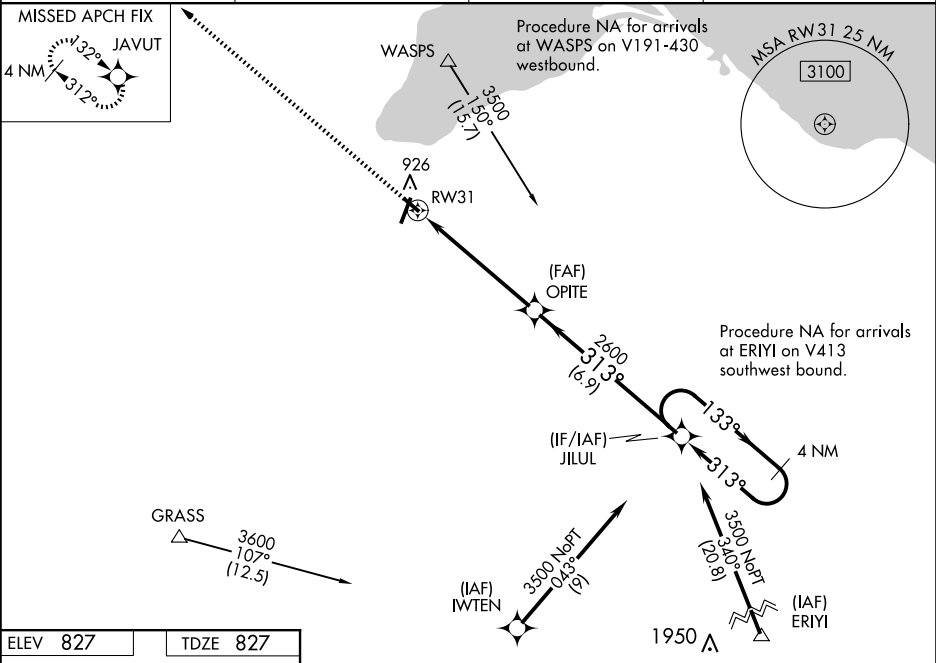
▼

▲

For uncompensated Baro-VNAV systems, LNAV/VNAV NA below -28°C (-18°F) or above 54°C (130°F). DME/DME RNP-0.3 NA. Helicopter visibility reduction below ¾ SM NA. Baro-VNAV and VDP NA when using Ironwood altimeter setting. When local altimeter setting not received, use Ironwood altimeter setting and increase all DAs 132 feet and all MDAs 140 feet; increase LPV all Cats and LNAV Cat C/D visibility ¾ mile, LNAV/VNAV all Cats and Circling Cat C/D visibility ½ mile.

MISSED APPROACH:
Climb to 3500 direct JAVUT and hold.

ASOS 126.775	MINNEAPOLIS CENTER 126.45 276.4	GCO 122.25	UNICOM 122.8 (CTAF) 0
------------------------	---	----------------------	---------------------------------



ELEV 827	TDZE 827
----------	----------

