

WAAS CH 72707 W02A	APP CRS 023°	Rwy Idg TDZE Apt Elev	5197 826 827
--	------------------------	-----------------------------	---

RNAV (GPS) RWY 2

JOHN F KENNEDY MEML (ASX)

RNP APCH.

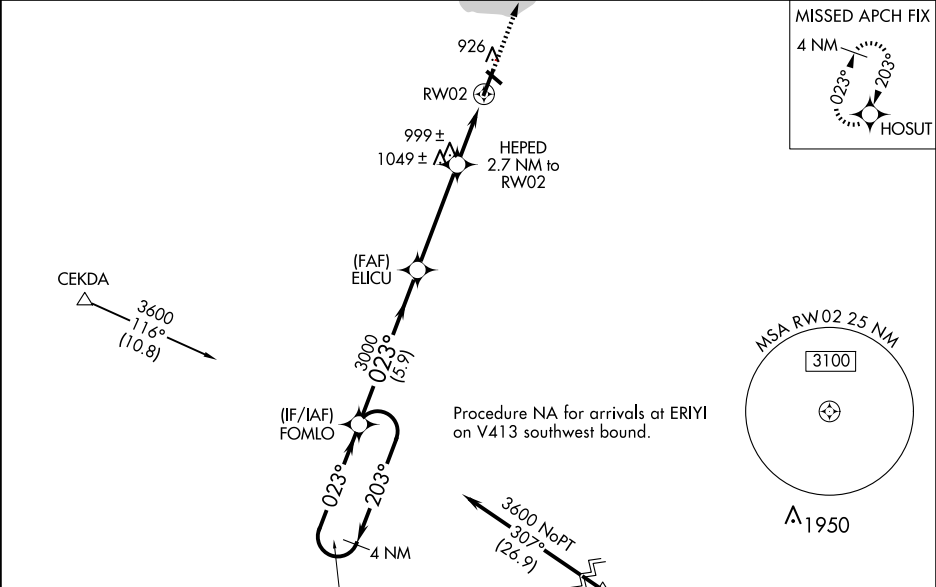
▼

▲

For uncompensated Baro-VNAV systems, LNAV/VNAV NA below -28°C or above 54°C.
Rwy 2 helicopter visibility reduction below ¾ SM NA. Baro-VNAV and VDP NA when using Ironwood altimeter setting. When local altimeter setting not received, use Ironwood altimeter setting and increase all DA 132 feet and all MDAs 140 feet; increase LPV all Cats and LNAV Cat C/D visibility ¾ SM, LNAV/VNAV all Cats and Circling Cat C/D visibility ½ SM.

MISSED APPROACH:
Climb to 3200 direct HOSUT and hold.

ASOS 126.775	MINNEAPOLIS CENTER 126.45 276.4	GCO 122.25	UNICOM 122.8 (CTAF) 0
------------------------	---	----------------------	--



ELEV 827

TDZE 826

4 NM Holding Pattern

FOMLO

ELICU

HEPED 2.7 NM to RWY 2

RWY 2

3200 HOSUT

*LNAV only

*1.4 NM to RWY 2

*1720

6000 ← 203°

3600 → 023°

GP 3.00° TCH 41

023°

3000

5.9 NM

4 NM

1.3

1.4

CATEGORY	A	B	C	D
LPV DA		1076-1	250 (300-1)	
LNAV/VNAV DA		1103-1	277 (300-1)	
LNAV MDA	1300-1	474 (500-1)	1300-1¾	474 (500-1¾)
CIRCLING	1300-1	473 (500-1)	1440-1¾ 613 (700-1¾)	1560-2¼ 733 (800-2¼)

REIL Rwy 2 0

MIRL Rwy 2-20 and 13-31 0