

WAAS
CH **61107**
W13A

APP CRS
132°

Rwy Idg
TDZE
Apt Elev
3498
827
827

RNAV (GPS) RWY 13

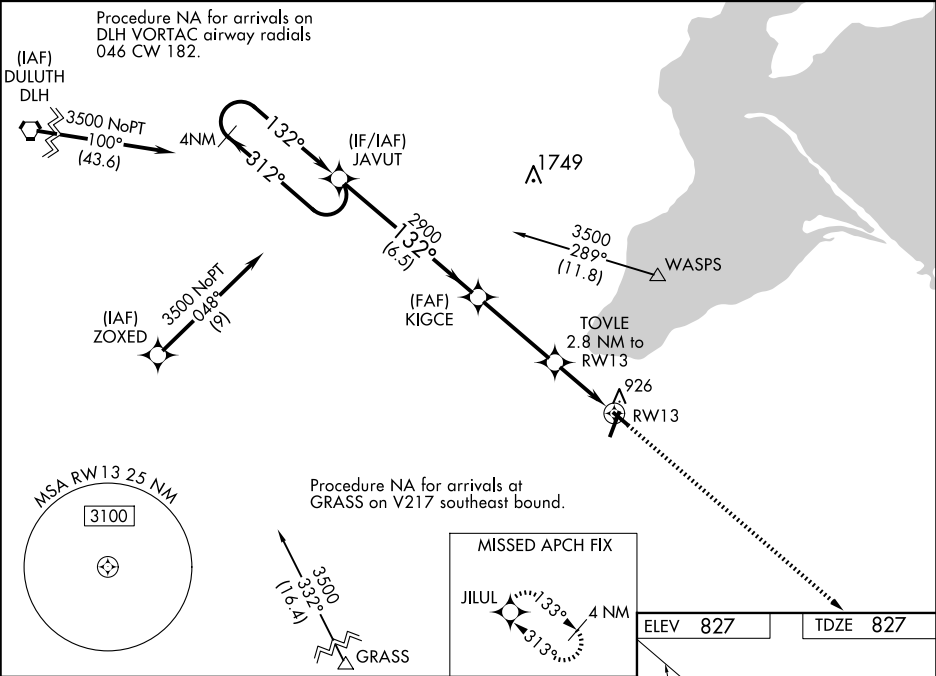
JOHN F KENNEDY MEML (ASX)

⚠

For uncompensated Baro-VNAV systems, LNAV/VNAV NA below -28°C (-18°F) or above 54°C (130°F). DME/DME RNP-0.3 NA. Helicopter visibility reduction below ¾ SM NA. Baro-VNAV and VDP NA when using Ironwood altimeter setting. When local altimeter setting not received, use Ironwood altimeter setting and increase all DAs 132 feet and all MDAs 140 feet; increase LPV, LNAV/VNAV all Cats, and LNAV Cat C/D visibility ¾ mile and Circling Cat C/D visibility ½ mile.

MISSED APPROACH:
Climb to 3500 direct JILUL and hold.

ASOS 126.775	MINNEAPOLIS CENTER 126.45 276.4	GCO 122.25	UNICOM 122.8 (CTAF) 0
------------------------	-------------------------------------------	----------------------	----------------------------------------



4 NM Holding Pattern

JAVUT

3500 ← 312°

132° →

KIGCE 2900

TOVLE 2.8 NM to RW13

*1740

*1.1 NM to RW13

RW13

GP 3.00° TCH 40

6.5 NM

3.6 NM

1.7 NM

1.1 NM

3500 JILUL

*LNAV Only.

132°

20

13

878

3498 X 75

0.43° UP

5197 X 100

2

CATEGORY	A	B	C	D
LPV DA		1077-7/8	250 (300-7/8)	
LNAV/ VNAV DA		1110-1	283 (300-1)	
LNAV MDA		1200-1	373 (400-1)	
CIRCLING	1240-1 413 (500-1)	1280-1 453 (500-1)	1440-1¾ 613 (700-1¾)	1560-2¼ 733 (800-2¼)

REIL Rwy 2 **0**

MIRL Rwy 2-20 and 13-31 **0**