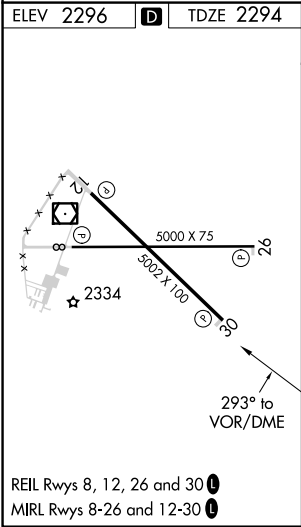
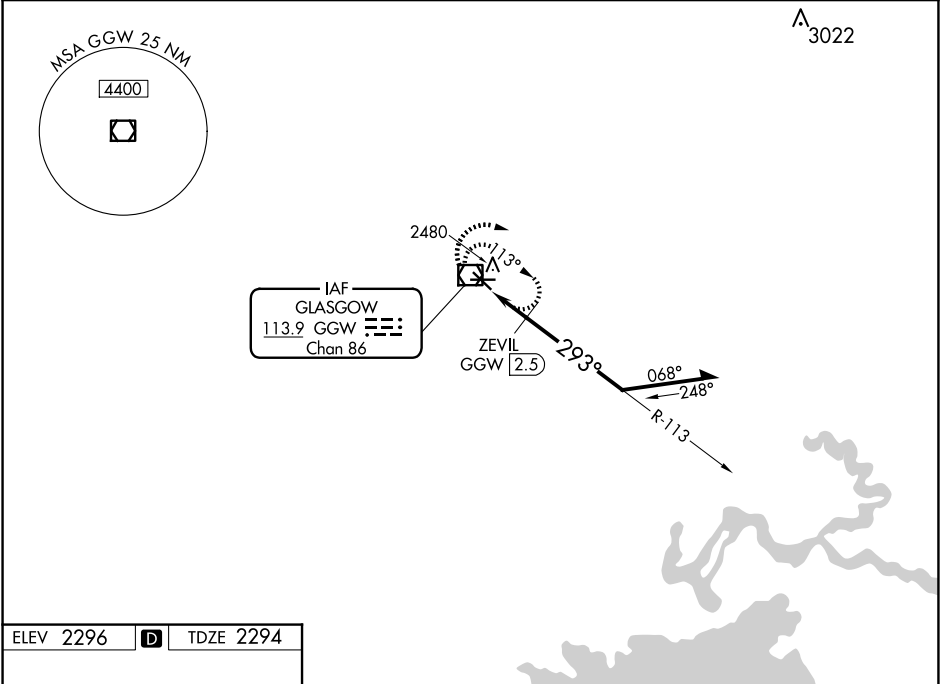


VOR/DME	GGW	APP CRS	Rwy Idg	5001
113.9		293°	TDZE	2294
Chan 86			Apt Elev	2296

VOR RWY 30

WOKAL FLD/GLASGOW-VALLEY COUNTY (GGW)

<p><b>⚠</b> ZEVIL fix Straight-in minimums NA when using Wolf Point altimeter setting. When local altimeter setting not received, use Wolf Point altimeter setting and increase all MDA 160 feet and increase visibilities all Cats ½ SM.</p>	<p>MISSED APPROACH: Climb to 4000 in GGW VOR/DME holding pattern.</p>
<p>ASOS 135.175</p>	<p>SALT LAKE CENTER 126.85 305.2</p>
<p>UNICOM 122.8 (CTAF) <b>0</b></p>	



4000

GGW

↑

☐

GGW VOR/DME

Remain within 10 NM

113°

4000

293°

2880\*

3.18

TCH 40

2.5 NM

2880-1

586 (600-1)

2880-1¾

584 (600-1¾)

2900-2

604 (700-2)

\* 3040 when using Wolf Point altimeter setting.

CATEGORY	A	B	C	D
S-30	2880-1	586 (600-1)	2880-1¾	586 (600-1¾)
CIRCLING	2880-1	584 (600-1)	2880-1¾ 584 (600-1¾)	2900-2 604 (700-2)
ZEVIL FIX MINIMUMS				
S-30	2740-1	446 (500-1)	2740-1⅞	446 (500-1⅞)
CIRCLING	2780-1	484 (500-1)	2780-1½ 484 (500-1½)	2900-2 604 (700-2)