

VOR/DME GGW
113.9
Chan **86**

APP CRS
133°

Rwy Idg
TDZE **2294**
Apt Elev **2296**

VOR RWY 12

WOKAL FLD/GLASGOW-VALLEY COUNTY (GGW)

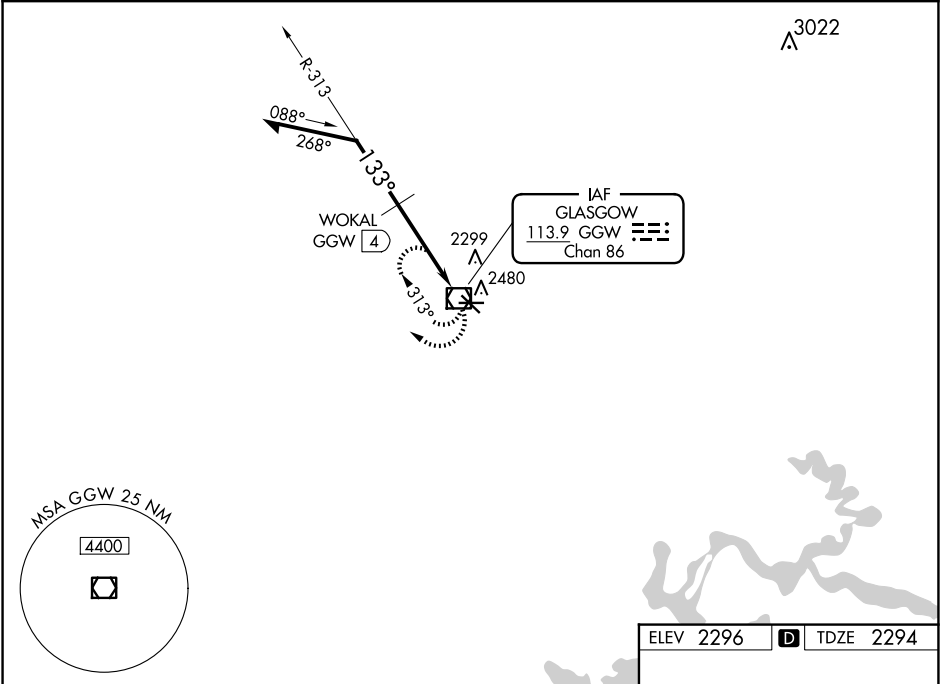
▼

▲

When local altimeter setting not received, use Wolf Point altimeter setting and increase all MDAs 160 feet and increase S-12 and Circling visibility Cats B/D ¼ SM, Cat C ½ SM and WOKAL fix minimums increase all MDAs 160 feet and increase visibility S-12 Cats C/D ½ SM, and Circling Cat C ¼ SM, Cat D ½ SM.

MISSED APPROACH:
Climb to 4100 in GGW
VOR/DME holding pattern.

ASOS 135.175	SALT LAKE CENTER 126.85 305.2	UNICOM 122.8 (CTAF) 0
------------------------	---	---------------------------------



Remain within 10 NM		GGW VOR/DME		4100	GGW
313°		WOKAL GGW 4		*3300 when using Wolf Point altimeter settings	
4100		133°		*3140	
4 NM					
CATEGORY	A	B	C	D	
S-12	3140-1 846 (900-1)	3140-1¼ 846 (900-1¼)	3140-2½ 846 (900-2½)	3140-2¾ 846 (900-2¾)	
CIRCLING	3140-1¼ 844 (900-1¼)		3140-2½ 844 (900-2½)	3140-2¾ 844 (900-2¾)	
WOKAL FIX MINIMUMS					
S-12	2700-1 406 (500-1)		2700-1¼ 406 (500-1¼)		
CIRCLING	2780-1 484 (500-1)		2780-1½ 484 (500-1½)	2900-2 604 (700-2)	
					REIL Rwy 8, 12, 26 and 30 0 MIRL Rwy 8-26 and 12-30 0