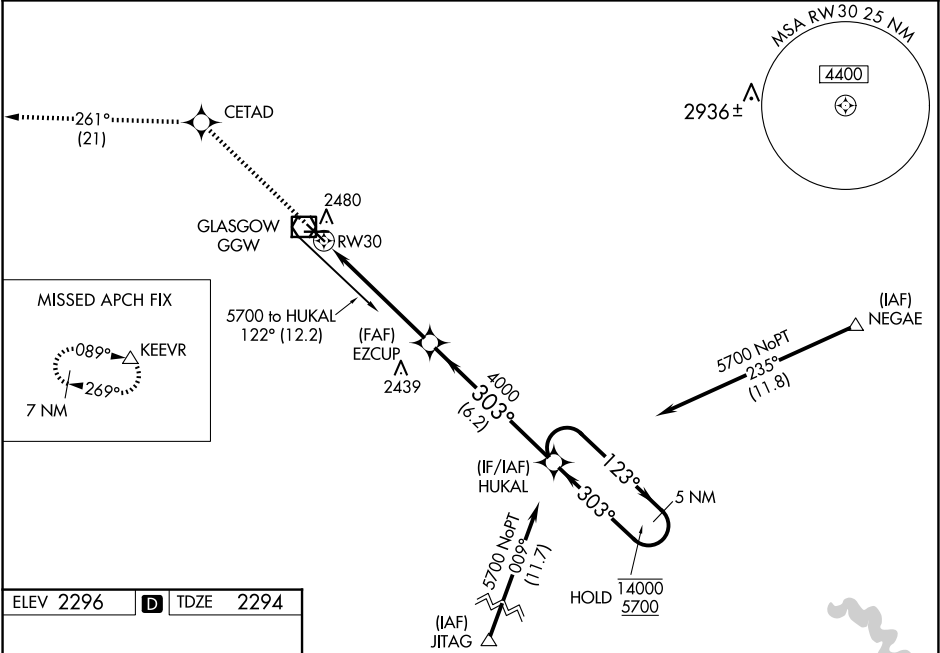


WAAS CH 99620 W30A	APP CRS 303°	Rwy Idg TDZE Apt Elev	5001 2294 2296
--	------------------------	-----------------------------	---

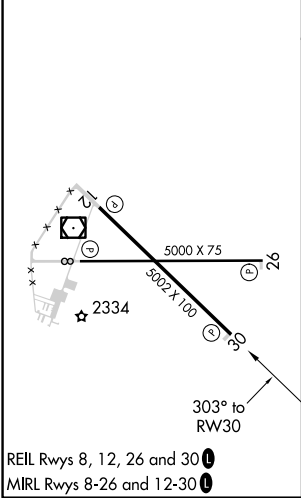
RNAV (GPS) RWY 30
WOKAL FLD/GLASGOW-VALLEY COUNTY (GGW)

RNP APCH. ⚠ For uncompensated Baro-VNAV systems, LNAV-VNAV NA below -14°C or above 54°C. When local altimeter setting not received, use Wolf Point altimeter setting and increase LPV DA to 2635 feet and all visibilities ¾ SM; increase LNAV/VNAV DA to 2728 feet and all visibilities ½ SM; increase all MDAs 160 feet and LNAV Cats C/D and Circling Cat D visibility ½ SM, Circling Cat C ¼ SM. Baro-VNAV and VDP NA when using Wolf Point altimeter setting.	MISSED APPROACH: Climb to 6500 direct CETAD and on track 261° to KEEVR and hold.
---	--

ASOS 135.175	SALT LAKE CENTER 126.85 305.2	UNICOM 122.8 (CTAF) 0
------------------------	---	---------------------------------



ELEV 2296	D	TDZE 2294
-----------	----------	-----------



6500	CETAD	tr 261°	KEEVR	HUKAL	5 NM Holding Pattern
* LNAV only					
* 1.2 NM to RWY 30					
RWY 30					
EVCUP 4000					
123° 14000					
303° 5700					
GP 3.00° TCH 40					
1.2 NM 4.1 NM 6.2 NM					
CATEGORY	A	B	C	D	
LPV DA	2494-¾ 200 (200-¾)				
LNAV/VNAV DA	2587-1 293 (300-1)				
LNAV MDA	2700-1	406 (500-1)	2700-1½	406 (500-1½)	
CIRCLING	2780-1	484 (500-1)	2780-1½	2900-2	604 (700-2)

NW-1, 10 JUL 2025 to 07 AUG 2025

NW-1, 10 JUL 2025 to 07 AUG 2025