

WAAS CH 93620 W12A	APP CRS 123°	Rwy Idg 5001 TDZE 2294 Apt Elev 2296
--	------------------------	---

RNAV (GPS) RWY 12

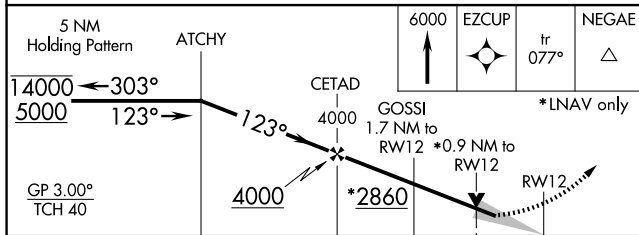
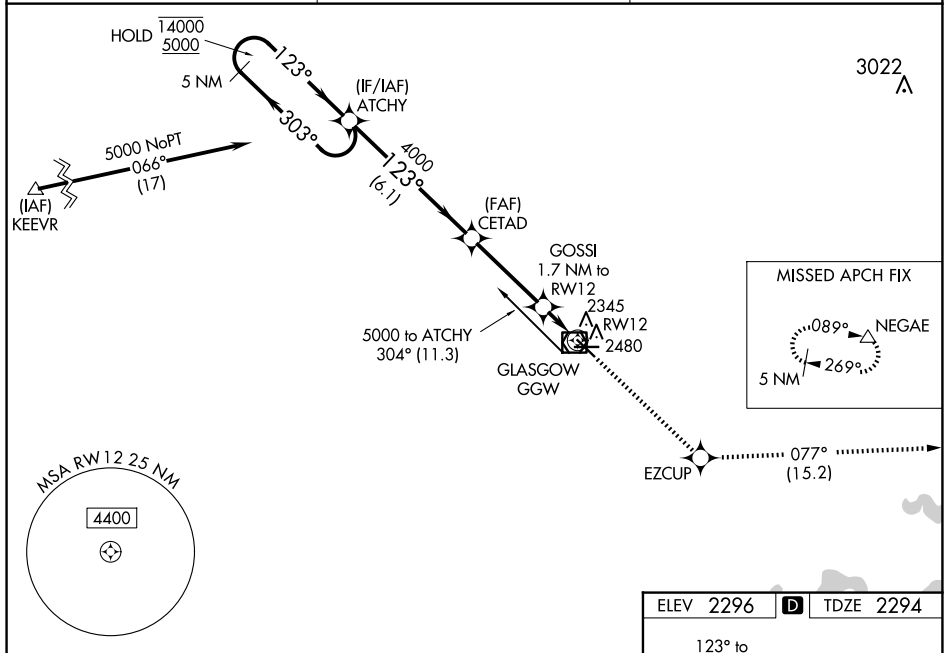
WOKAL FLD/GLASGOW-VALLEY COUNTY (GGW)

RNP APCH.

V For uncompensated Baro-VNAV systems, LNAV-VNAV NA below -14°C or above 54°C. When local altimeter setting not received, use Wolf Point altimeter setting and increase LPV DA to 2685 feet and visibility all Cats ½ SM; Increase LNAV/VNAV DA to 2728 feet and visibility all Cats ½ SM; increase all MDAs 160 feet and LNAV Cats C/D and Circling Cat D visibility ½ SM, Circling Cat C ¼ SM. Baro-VNAV and VDP NA when using Wolf Point altimeter setting.

MISSED APPROACH:
Climb to 6000 direct
EZCUP and on track
077° to NEGAE
and hold.

ASOS 135.175	SALT LAKE CENTER 126.85 305.2	UNICOM 122.8 (CTAF) 0
------------------------	---	--



CATEGORY		A		B		C		D	
LPV	DA	2544- $\frac{7}{8}$		250 (300- $\frac{7}{8}$)					
RNAV/ VNAV	DA	2587-1		293 (300-1)					
RNAV	MDA	2600-1	306 (400-1)	2600- $\frac{7}{8}$		306 (400- $\frac{7}{8}$)			
CIRCLING		2780-1	484 (500-1)	2780-1 $\frac{1}{2}$ 484 (500-1 $\frac{1}{2}$)		2900-2 604 (700-2)			

