

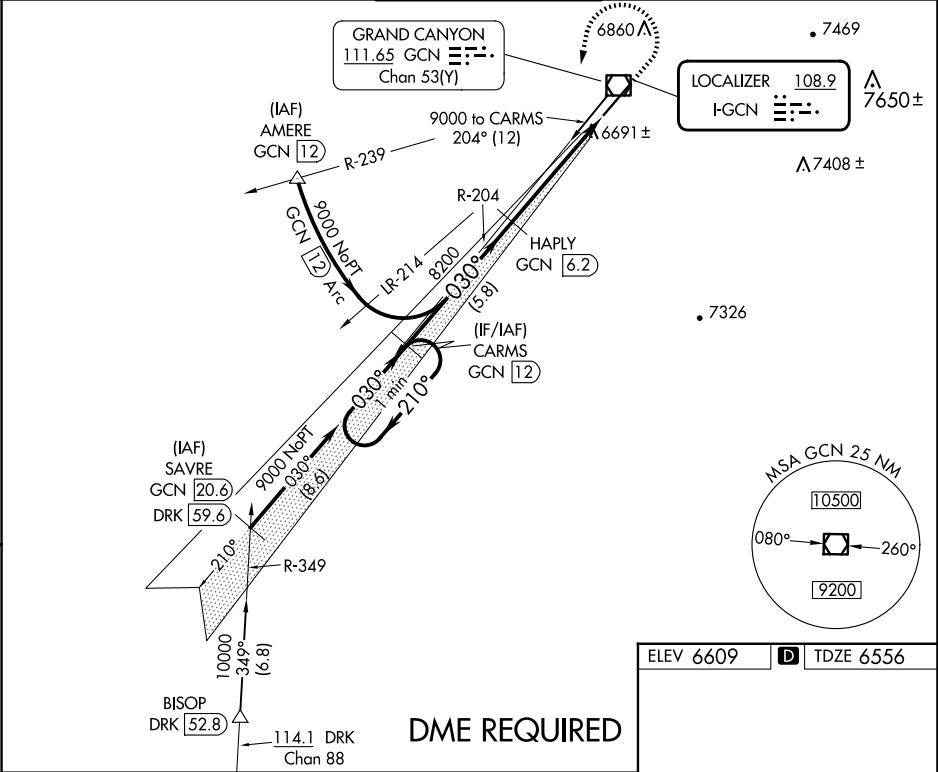
LOC I-GCN	APP CRS	Rwy Idg
108.9	030°	8999
		TDZE
		6556
		Apt Elev
		6609

ILS or LOC RWY 3

GRAND CANYON NTL PARK (GCN)

<div><div>⚠</div><div>DME from GCN VOR/DME. Simultaneous reception of I-GCN and GCN DME required. DME required.</div></div>	MISSED APPROACH: Climb to 7000 then climbing left turn to 9000 on heading 180° and on GCN VOR/DME R-204 direct CARMS/GCN 12 DME and hold.
---	---

ATIS	LOS ANGELES CENTER	CANYON TOWER★	GND CON	UNICOM
124.3	124.85 319.2	119.0 (CTAF) 0	121.9	122.95



DME REQUIRED				
<div>One Minute Holding Pattern</div> <div>9000 ← 210° / 030° →</div> <div>GS 3.00° TCH 58</div> <div>5.8 NM 3.9 NM 1.2 NM</div>				
CATEGORY	A	B	C	D
S-ILS 3	6795-¾ 239 (200-¾)			
S-LOC 3	6960-1	404 (400-1)	6960-1⅛	404 (400-1⅛)
CIRCLING	7140-1 531 (600-1)	7200-1 591 (600-1)	7280-2 671 (700-2)	7620-3 1011 (1100-3)

