

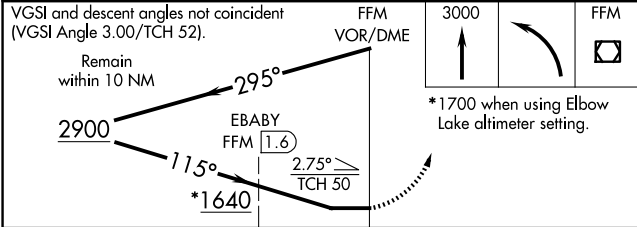
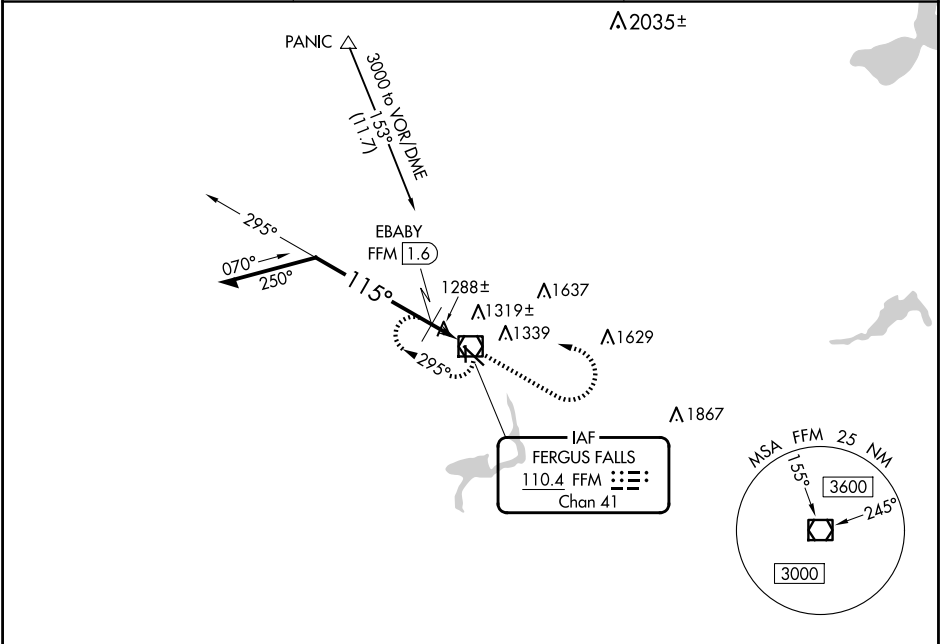
VOR/DME FFM	APP CRS	Rwy Ldg	5639
110.4	115°	TDZE	1182
Chan 41		Apt Elev	1183

VOR RWY 13

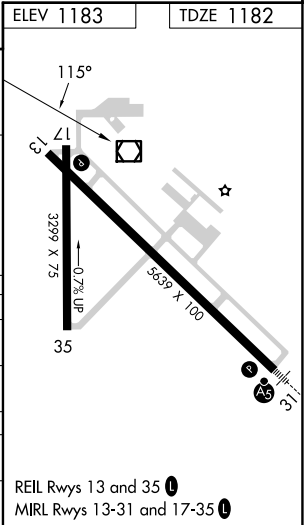
FERGUS FALLS MUNI/EINAR MICKELSON FLD (FFM)

<p>V When local altimeter setting not received, use Elbow Lake altimeter setting and increase all MDAs 60 feet; increase Circling Cat C/D visibility ¼ SM. EBABY fix minimums increase S-13 Cat C/D and Circling Cat C/D visibility ¼ SM.</p> <p>NA</p>	<p>MISSED APPROACH: Climb to 3000 then left turn direct FFM VOR/DME and hold.</p>
---	---

AWOS-3PT 119.05	MINNEAPOLIS CENTER 126.1 269.2	UNICOM 122.8 (CTAF) 0
--------------------	-----------------------------------	---------------------------------



CATEGORY	A	B	C	D
S-13	1640-1	458 (500-1)	1640-1 3/8	458 (500-1 3/8)
CIRCLING	1640-1 457 (500-1)	1740-1 557 (600-1)	1820-1 3/4 637 (700-1 3/4)	1940-2 1/2 757 (800-2 1/2)
EBABY FIX MINIMUMS				
S-13	1580-1	398 (400-1)	1580-1 1/8	398 (400-1 1/8)
CIRCLING	1640-1 457 (500-1)	1740-1 557 (600-1)	1820-1 3/4 637 (700-1 3/4)	1940-2 1/2 757 (800-2 1/2)



NC-1, 10 JUL 2025 to 07 AUG 2025

NC-1, 10 JUL 2025 to 07 AUG 2025