

APP CRS
354°

Rwy Ldg
TDZE
1182

Apt Elev
1183

RNAV (GPS) RWY 35

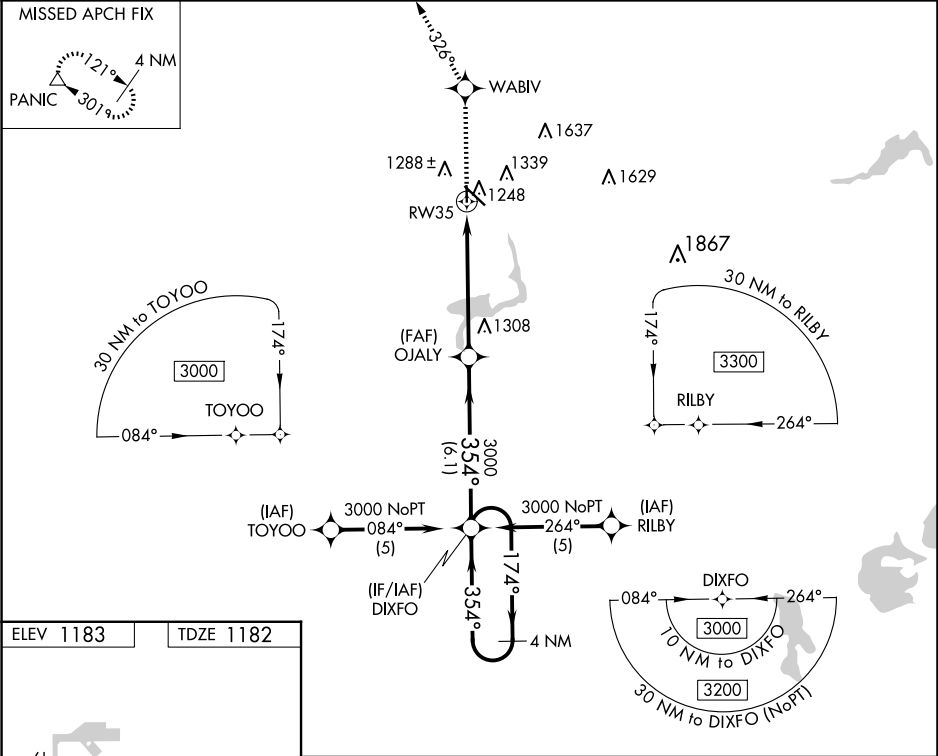
FERGUS FALLS MUNI/EINAR MICKELSON FLD (FFM)

RNP APCH-GPS.

When local altimeter setting not received, use Elbow Lake altimeter setting and increase all MDAs 60 feet, increase LNAV and Circling Cat C visibility ¼ SM. VDP NA when using Elbow Lake altimeter setting.

MISSED APPROACH: Climb to 3000 direct WABIV and via track 326° to PANIC and hold.

AWOS-3PT 119.05	MINNEAPOLIS CENTER 126.1 269.2	UNICOM 122.8 (CTAF) 0
--------------------	-----------------------------------	--------------------------



3000	WABIV	tr 326°	PANIC	4 NM Holding Pattern
CATEGORY	A	B	C	D
LNAV MDA	1560-1 378 (400-1)			NA
CIRCLING	1640-1 457 (500-1)	1740-1 557 (600-1)	1820-1¾ 637 (700-1¾)	NA