

WAAS CH <b>65904</b> <b>W22A</b>	APP CRS <b>217°</b>	Rwy Ldg TDZE <b>743</b> Apt Elev <b>755</b>	<b>6801</b>
--	------------------------	---	-------------

RNAV (GPS) RWY 22

SHEBOYGAN COUNTY MEML INTL (SBM)

RNP APCH - GPS.

▼

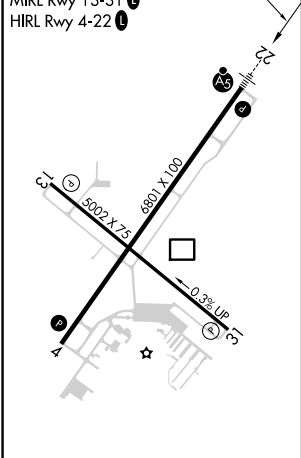
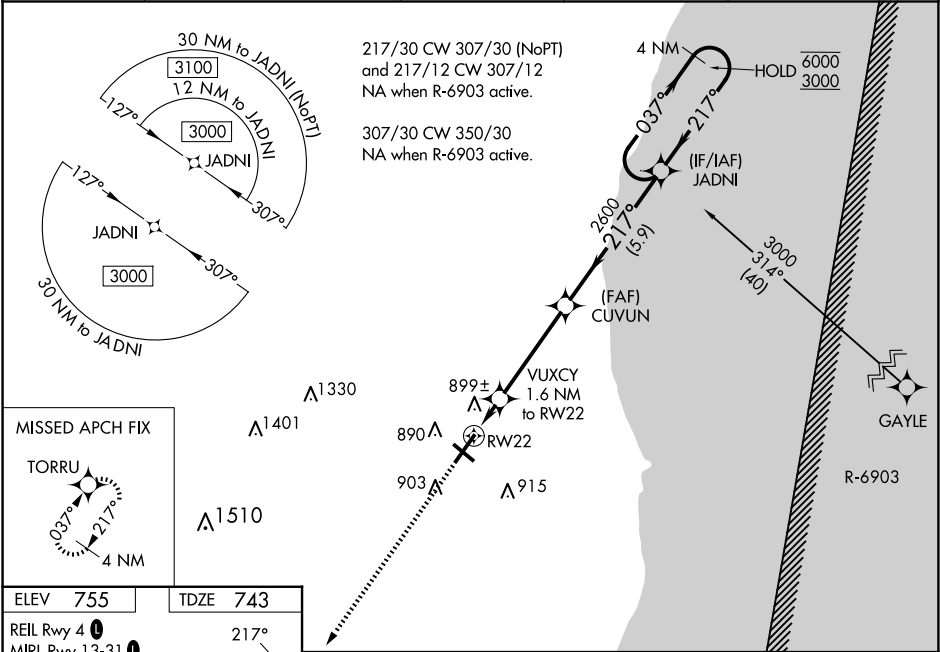
▲

For uncompensated Baro-VNAV systems, LNAV/VNAV NA below -19°C or above 54°C. For inop ALS, increase LNAV/Cats C and D visibility to 1½ SM.

MALSR

MISSED APPROACH: Climb to 3000 direct TORRU and hold.

ASOS <b>118.425</b>	MILWAUKEE APP CON <b>127.375 263.075</b>	GCO <b>121.725</b>	CLNC DEL <b>127.375</b>	UNICOM <b>122.7 (CTAF) 0</b>
------------------------	---	-----------------------	----------------------------	---------------------------------



ELEV 755	TDZE 743
REIL Rwy 4 0	217°
MIRL Rwy 13-31 1	
HIRL Rwy 4-22 1	
3000 TORRU	
VUXCY 1.6 NM to RW22	
CUVUN 2600	
JADNI 4 NM Holding Pattern	
RW22 1300	
GP 3.00° TCH 50	
1.6 NM 4.1 NM 5.9 NM	
CATEGORY	A B C D
LPV DA	943-½ 200 (200-½)
LNAV/VNAV DA	1188-¾ 445 (500-¾)
LNAV MDA	1160-½ 417 (500-½) 1160-¾ 417 (500-¾)
CIRCLING	1200-1 445 (500-1) 1240-1 485 (500-1) 1340-1½ 585 (600-1½) 1360-2 605 (700-2)