

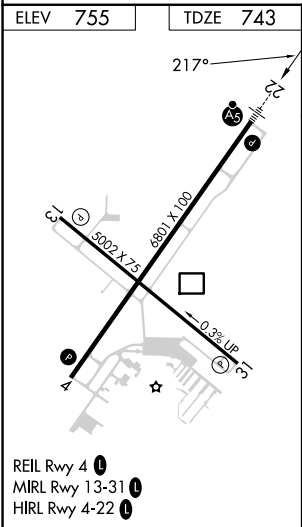
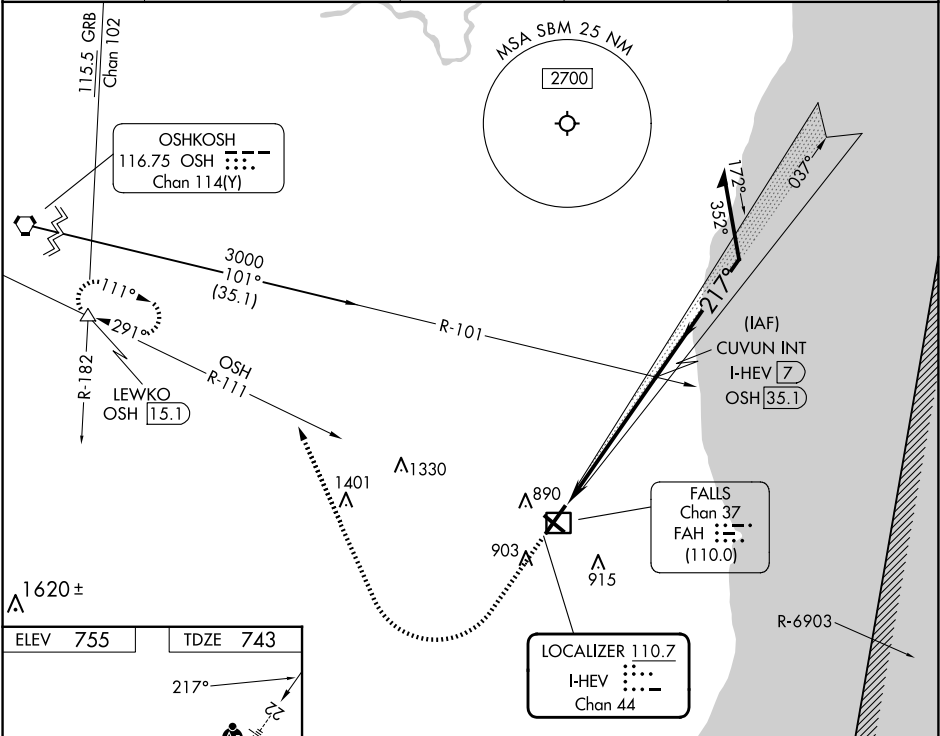
LOC/DME I-HEV	APP CRS	Rwy Ldg	6801
110.7	217°	TDZE	743
Chan 44		Apt Elev	755

ILS or LOC RWY 22

SHEBOYGAN COUNTY MEML INTL (SBM)

DME required.	MALSR	MISSED APPROACH: Climb to 1400 then climbing right turn to 3000 on heading 338° and OSH VORTAC R-111 to LEWKO INT/OSH 15.1 DME and hold.
NA		

ASOS 118.425	MILWAUKEE APP CON 127.375 263.075	GCO 121.725	CLNC DEL 127.375	UNICOM 122.7 (CTAF)
-----------------	--------------------------------------	----------------	---------------------	------------------------



1400	3000	OSH	LEWKO	Use I-HEV DME when on the localizer course.
	hdg 338°	R-111		CUVUN INT I-HEV 7
				Remain within 10 NM
				GS 3.00° TCH 50
	1.3 NM	4.4 NM		
CATEGORY	A	B	C	D
S-ILS 22	943-1/2 200 (200-1/2)			
S-LOC 22	1200-1/2 457 (500-1/2)		1200-7/8 457 (500-7/8)	
CIRCLING	1200-1 445 (500-1)	1240-1 485 (500-1)	1340-1 1/2 585 (600-1 1/2)	1360-2 605 (700-2)