

WAAS CH 86904 W23A	APP CRS 230°	Rwy Idg TDZE 185 Apt Elev 192
--	------------------------	---

RNAV (GPS) RWY 23

DARLINGTON COUNTY (UDG)

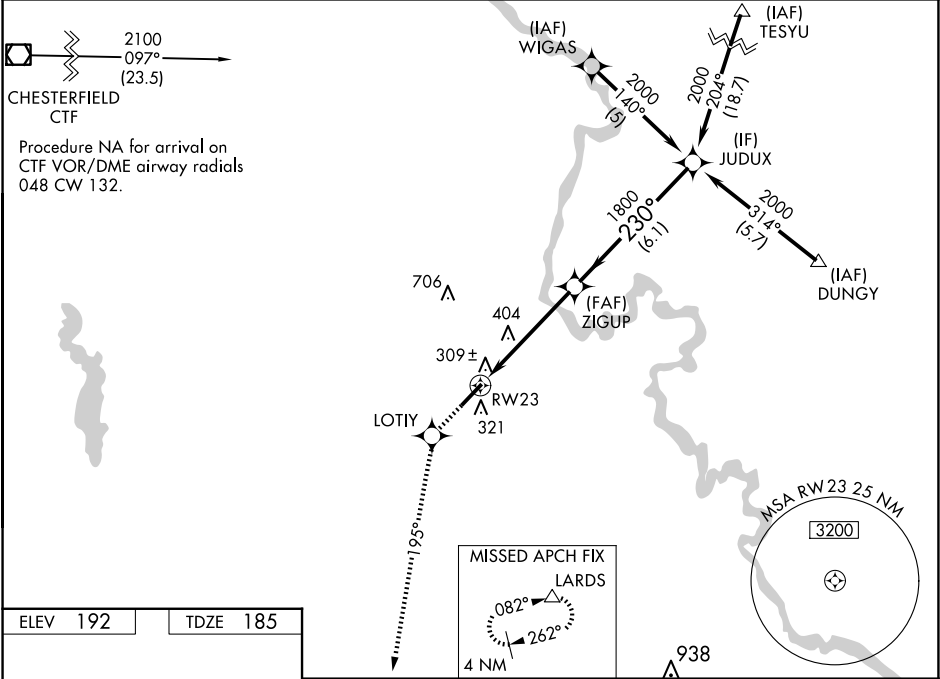
▼

▲

For uncompensated Baro-VNAV systems, LNAV/VNAV NA below -15°C (5°F) or above 48°C (118°F). When local altimeter setting not received, use Florence altimeter setting: increase LPV DA to 527 feet and all visibilities ¼ SM; increase LNAV/VNAV DA to 627 feet; increase all MDAs 60 feet and visibility Cat D ¼ SM. DME/DME RNP-0.3 NA. Helicopter visibility reduction below ¾ SM NA. Baro-VNAV NA when using Florence altimeter setting.

MISSED APPROACH:
Climb to 2000 direct LOTIY and via 195° track to LARDS and hold.

AWOS-3PT 119.925	FLORENCE APP CON ★ 118.6 341.7	CLNC DEL 118.55	UNICOM 123.0 (CTAF) 0
----------------------------	--	---------------------------	---------------------------------



ELEV 192	TDZE 185
----------	----------

2000

↑

LOTIY

tr 195°

LARDS

*LNAV only.

*1.5 NM to RW23

RW23

1.5

3.4 NM

6.1 NM

JUDUX

2000

Procedure Turn NA

GP 3.00°

TCH 40

CATEGORY	A	B	C	D
LPV DA	479-1 294 (300-1)			
LNAV/VNAV DA	579-1½ 394 (400-1½)			
LNAV MDA	700-1	515 (600-1)	700-1½ 515 (600-1½)	700-1¾ 515 (600-1¾)
CIRCLING	700-1	508 (600-1)	720-1½ 528 (600-1½)	1020-2¾ 828 (900-2¾)