

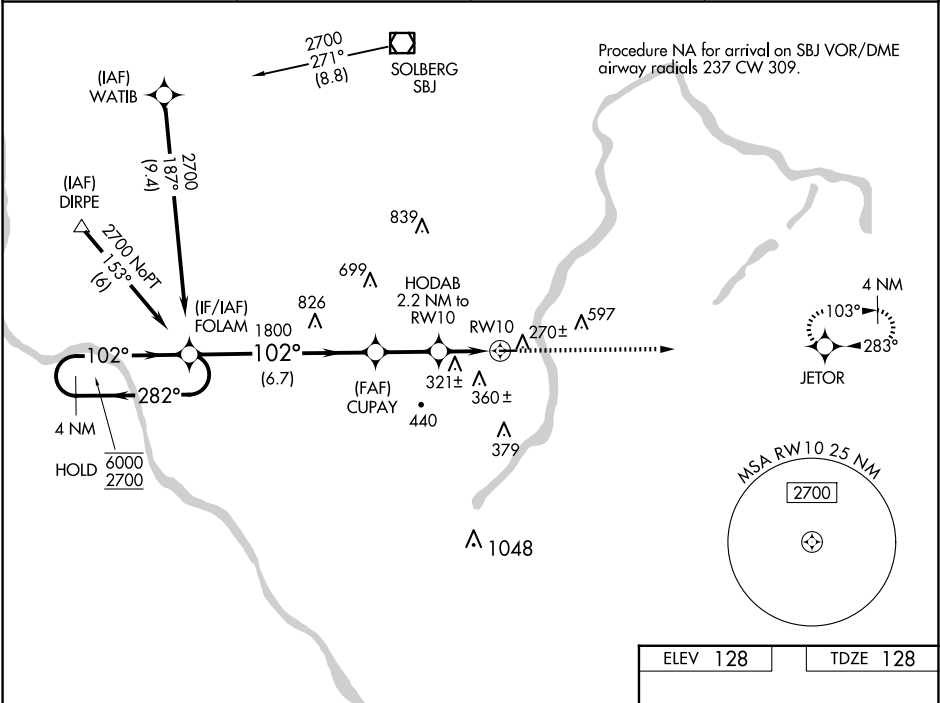
WAAS CH <b>86843</b> <b>W10A</b>	APP CRS <b>102°</b>	Rwy Idg TDZE <b>128</b> Apt Elev <b>128</b>	<b>3499</b>
--	------------------------	---	-------------

RNAV (GPS) RWY 10

PRINCETON (39N)

RNP APCH - GPS.	MISSED APPROACH: Climb to 2700 direct JETOR and hold.
Rwy 10 helicopter visibility reduction below ¾ SM NA. Circling Rwy 28 NA at night. Baro-VNAV NA. Use Trenton altimeter setting.	

TTN ASOS <b>126.775</b>	NEWARK APP CON <b>132.8 379.9</b>	UNICOM <b>122.725</b> (CTAF)	<b>123.05 0</b>
----------------------------	--------------------------------------	---------------------------------	-----------------



4 NM Holding Pattern		VGSi and descent angles not coincident (VGSi Angle 3.45/TCH 42).		2700	JETOR
6000 2700		FOLAM		*LNAV only.	
GP 3.45° TCH 51		CUPAY 1800		RWY 10	
282°		102°		2.2 NM	
102°		*960		2.2 NM	
6.7 NM		2.3 NM		2.2 NM	
CATEGORY	A	B	C	D	
LPV DA	441-1		313 (400-1)		
LNAV/VNAV DA	533-1½		405 (500-1½)		
LNAV MDA	580-1		580-1¾		452 (500-1¾)
CIRCLING	760-1 632 (700-1)	840-1 712 (800-1)	940-2½ 812 (900-2½)	1000-2¾ 872 (900-2¾)	