


WAAS CH 97427 W09A	APP CRS 096°	Rwy Idg TDZE Apt Elev	6579 1321 1328
--	------------------------	-----------------------------	---

RNAV (GPS) RWY 9
GAYLORD RGNL (GLR)

RNP APCH - GPS.

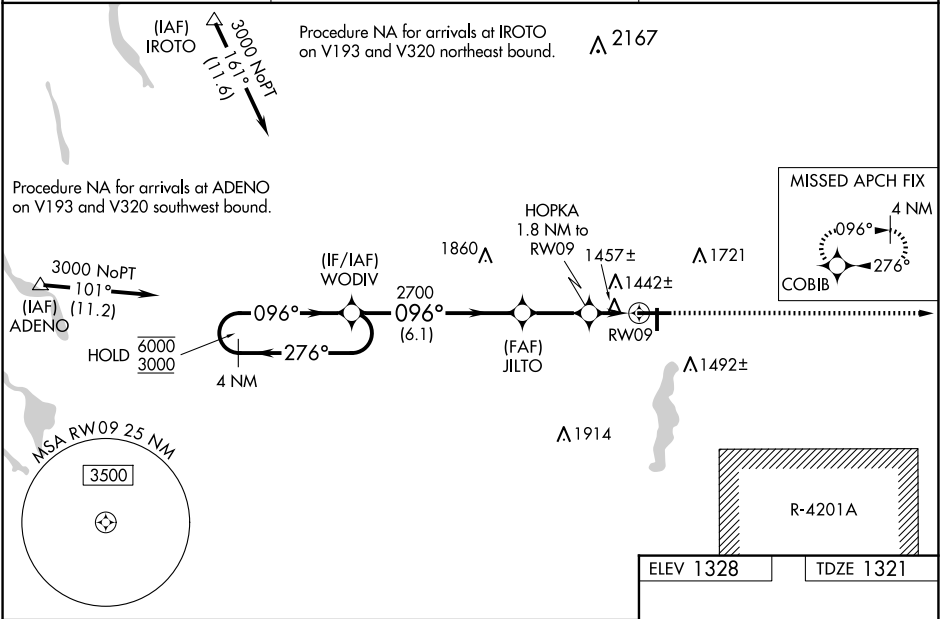
⚠ Circling Rwy 18, 36 NA at night. Baro-VNAV and VDP NA when using GOV altimeter setting. For uncompensated Baro-VNAV systems, LNAV/VNAV NA below -21° C or above 54° C. Inoperative table does not apply to LPV. When local altimeter setting not received, use GOV altimeter setting: increase LPV DA to 1591 feet; increase LNAV/VNAV DA to 1790 feet and all visibilities ¼ SM; increase all MDAs 80 feet and LNAV and Circling visibility Cats C and D ¼ SM. For inoperative ALS when using GOV altimeter setting, increase LNAV/VNAV visibility all Cats to 1 ½ SM and LNAV visibility Cats C and D to 1 ½ SM.

MALSR



MISSED APPROACH:
Climb to 3100 direct COBIB and hold.

ASOS 118.375	MINNEAPOLIS CENTER 134.6 354.05	UNICOM 122.8 (CTAF) 0
------------------------	---	---------------------------------



4 NM Holding Pattern

VGSI and RNAV glidepath not coincident (VGSI Angle 3.00/TCH 38).

WODIV

6000 3000 276° 096°

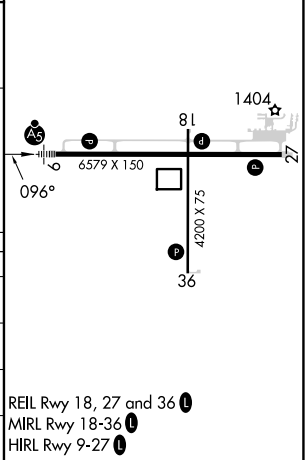
GP 3.00° TCH 49

JILTO 2700 1940

HOPKA 1.8 NM to RW09 1.1 NM to RW09

6.1 NM 2.4 NM 0.7 NM 1.1 NM

CATEGORY	A	B	C	D
LPV DA	1521-¾ 200 (200-¾)			
LNAV/VNAV DA	1720-¾ 399 (400-¾)			
LNAV MDA	1720-¾ 399 (400-¾)			
CIRCLING	1840-1 512 (600-1)	1940-1 612 (700-1)	2040-2 712 (800-2)	2080-2½ 752 (800-2½)



EC-1, 10 JUL 2025 to 07 AUG 2025

EC-1, 10 JUL 2025 to 07 AUG 2025