

WAAS CH <b>56327</b> <b>W27A</b>	APP CRS <b>276°</b>	Rwy Idg <b>6579</b> TDZE <b>1328</b> Apt Elev <b>1328</b>
--	------------------------	---

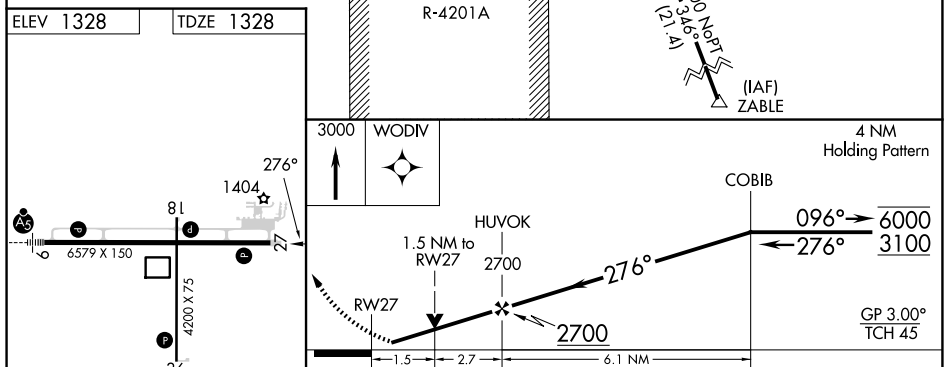
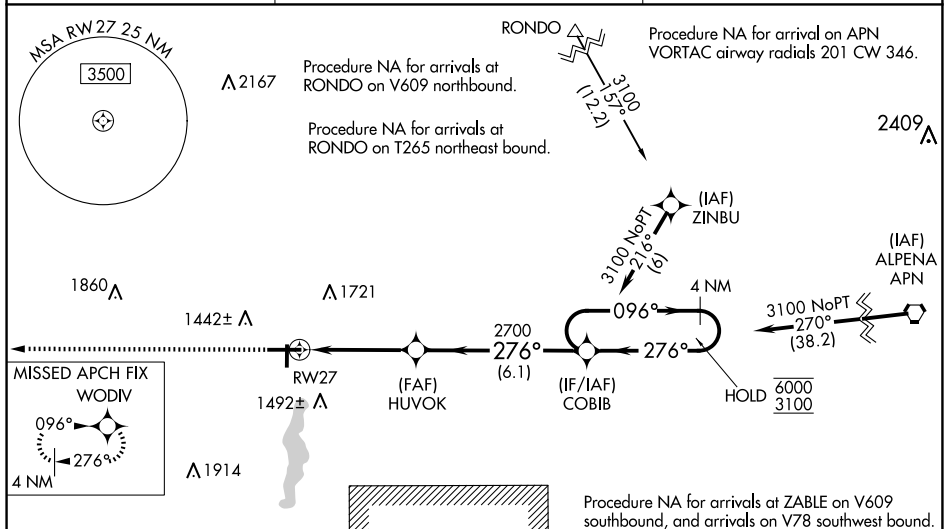
RNAV (GPS) RWY 27  
GAYLORD RGNL (GLR)

RNP APCH - GPS.

- T** Circling Rwy 18, 36 NA at night. Rwy 27 helicopter visibility reduction below  $\frac{3}{4}$  SM NA.  
**A** VDP NA when using GOV altimeter setting. When local altimeter setting not received, use GOV altimeter setting: increase LPV DA to 1648 feet; increase all MDAs 80 feet and LNAV visibility Cats C and D  $\frac{3}{8}$  SM and Circling visibility Cats C and D  $\frac{1}{4}$  SM.

**MISSED APPROACH:** Climb to 3000 direct WODIV and hold.

ASOS <b>118.375</b>	MINNEAPOLIS CENTER <b>134.6 354.05</b>	UNICOM <b>122.8 (CTAF) 0</b>
------------------------	---	---------------------------------



CATEGORY	A	B	C	D
LPV DA	1578-1 250 (300-1)			
LNAV MDA	1840-1 512 (600-1)	1840-1 <sup>3</sup> / <sub>8</sub> 512 (600-1 <sup>3</sup> / <sub>8</sub> )		
CIRCLING	1840-1 512 (600-1)	1940-1 612 (700-1)	2040-2 712 (800-2)	2080-2 <sup>1</sup> / <sub>2</sub> 752 (800-2 <sup>1</sup> / <sub>2</sub> )