

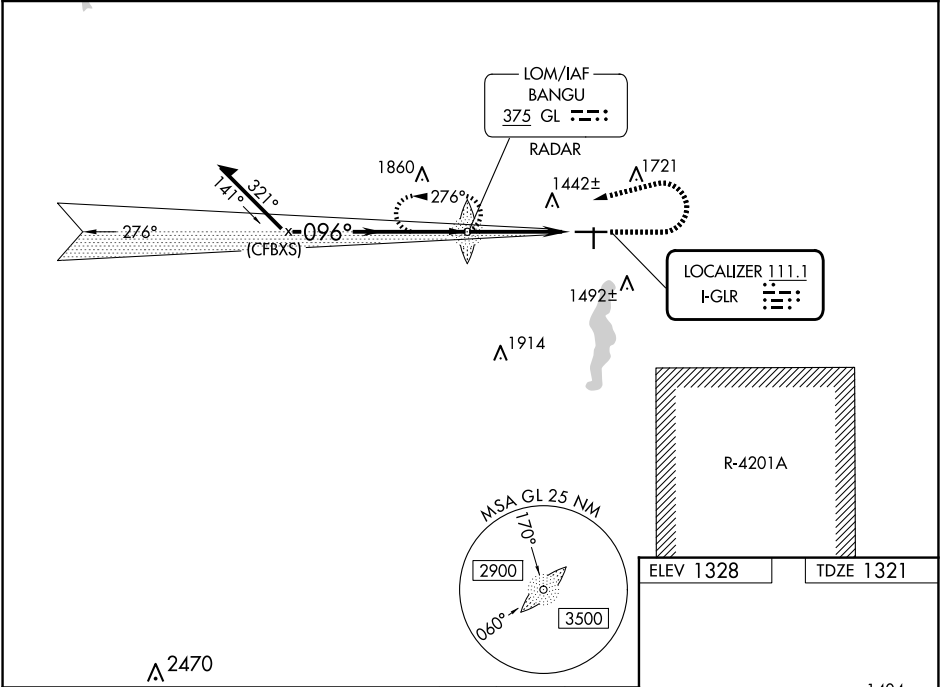


LOC I-GLR <b>111.1</b>	APP CRS <b>096°</b>	Rwy ldg <b>6579</b> TDZE <b>1321</b> Apt Elev <b>1328</b>
---------------------------	------------------------	---

ILS or LOC RWY 9  
GAYLORD RGNL (GLR)

ADF required. RADAR required for procedure entry.		<div>MALSR</div> <div></div>	MISSED APPROACH: Climb to 3000 then left turn direct BANGU LOM and hold.
<div><div><div>T</div><div>A NA</div></div></div> <div>Circling Rwy 18, 36 NA at night. When local altimeter setting not received, use GOV altimeter setting and increase S-ILS 9 DA to 1591 feet; increase all MDAs 80 feet and S-LOC 9 visibility Cat C and D ¾ SM, and Circling visibility Cat C and D ¼ SM. For inop ALS when using GOV altimeter setting, increase S-ILS 9 all Cats visibility to ¾ SM and S-LOC 9 Cats C and D visibility to 1 ¼ SM. For inop ALS, increase S-LOC 9 Cats C and D visibility ¾ SM.</div>			
ASOS 118.375	MINNEAPOLIS CENTER 134.6 354.05	UNICOM 122.8 (CTAF) 	



Remain within 10 NM		GL LOM RADAR	3000	GL
3000		276°	3000	
096°		2605	VGSI and ILS glidepath not coincident (VGSI Angle 3.00/TCH 38).	
GS 3.00° TCH 50		2700	3.9 NM	
CATEGORY	A	B	C	D
S-ILS 9	1521-1 ½		200 (200-1 ½)	
S-LOC 9	1860-1 ½	539 (600-1 ½)	1860-1	539 (600-1)
CIRCLING	1860-1 532 (600-1)	1940-1 612 (700-1)	2040-2 712 (800-2)	2040-2 ¼ 712 (800-2 ¼)
HIRL Rwy 9-27 0 MIRL Rwy 18-36 0 REIL Rws 18, 27 and 36 0				
FAF to MAP 3.9 NM				
Knots		60	90	120 150 180
Min:Sec		3:54	2:36	1:57 1:34 1:18

EC-1, 10 JUL 2025 to 07 AUG 2025

EC-1, 10 JUL 2025 to 07 AUG 2025