

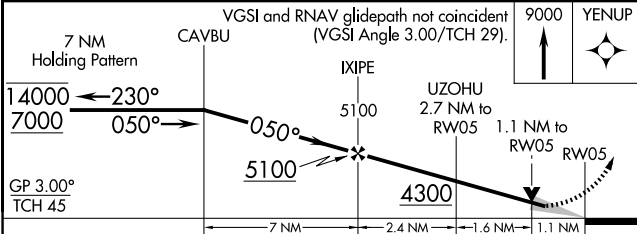
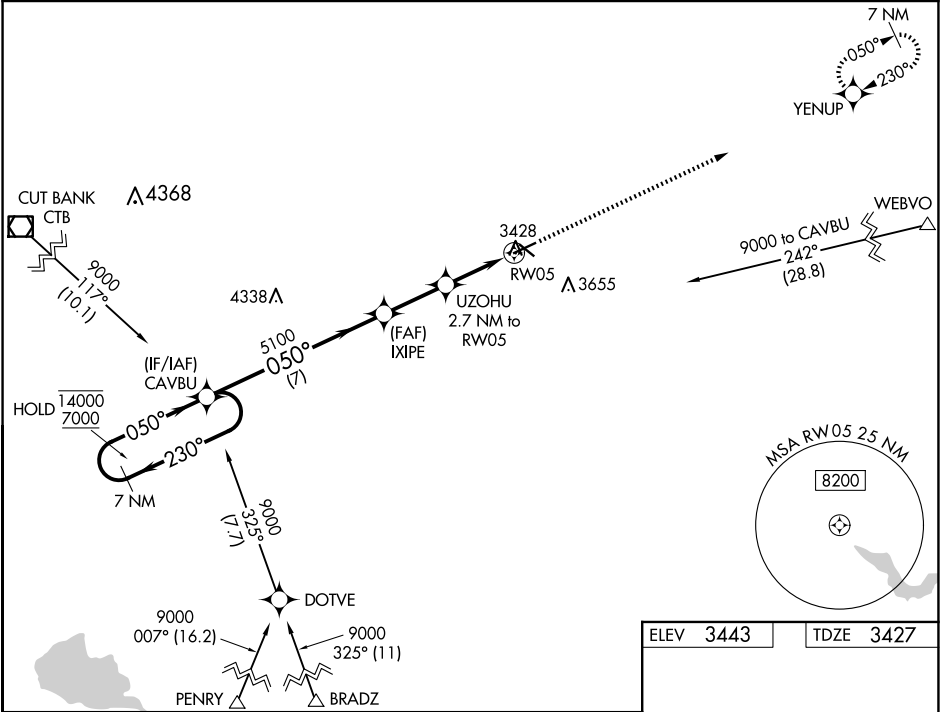
WAAS CH 69630 W05A	APP CRS 050°	Rwy Idg TDZE 3427 Apt Elev 3443
--	------------------------	---

RNAV (GPS) RWY 5

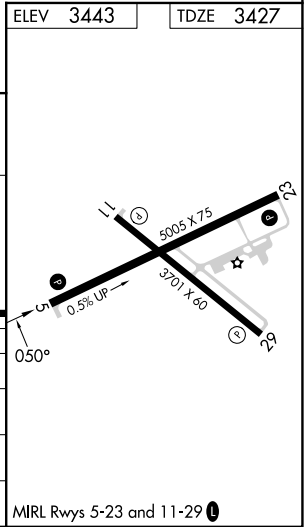
SHELBY (SBX)

RNP APCH - GPS.	MISSED APPROACH: Climb to 9000 direct YENUP and hold, continue climb-in-hold to 9000.
<div><div></div><div>Baro-VNAV and VDP NA when using Cut Bank altimeter setting. For uncompensated Baro-VNAV systems, LNAV/VNAV NA below -21°C or above 54°C. When local altimeter setting not received, use Cut Bank altimeter setting.</div></div>	

AWOS-3PT 128.325	SALT LAKE CITY CENTER 133.4 285.4	UNICOM 122.8 (CTAF) 0
----------------------------	---	---------------------------------



CATEGORY	A	B	C	D
LPV DA		3733-1	306 (300-1)	
LNAV/VNAV DA		3783-1	356 (400-1)	
LNAV MDA		3800-1	373 (400-1)	
CIRCLING	4020-1 577 (600-1)	4080-1 637 (700-1)	4100-1¾ 657 (700-1¾)	4220-2½ 777 (800-2½)



NW-1, 10 JUL 2025 to 07 AUG 2025

NW-1, 10 JUL 2025 to 07 AUG 2025