

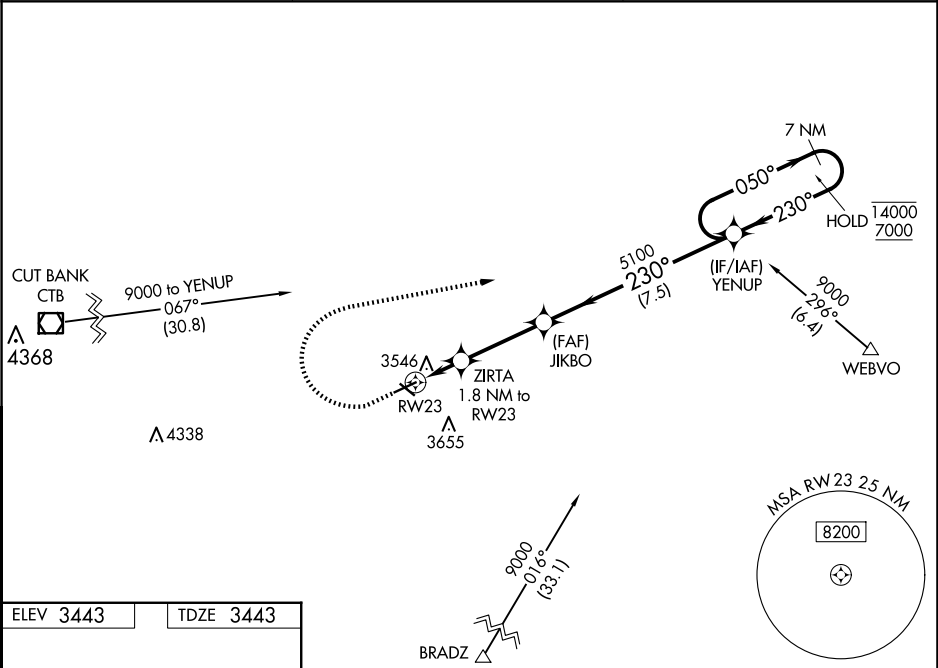
WAAS CH 78026 W23A	APP CRS 230°	Rwy Idg TDZE Apt Elev	5005 3443 3443
--	------------------------	-----------------------------	---

RNAV (GPS) RWY 23

SHELBY (SBX)

RNP APCH - GPS.	
<div><div></div><div></div></div> <div>Rwy 23 helicopter visibility reduction below ¾ SM NA. Baro-VNAV NA when using Cut Bank altimeter setting. For uncompensated Baro-VNAV systems, LNAV/VNAV NA below -21°C or above 54°C. When local altimeter setting not received, use Cut Bank altimeter setting.</div>	MISSED APPROACH: Climb to 4300 then climbing right turn to 9000 direct YENUP and hold, continue climb-in-hold to 9000.

AWOS-3PT 128.325	SALT LAKE CITY CENTER 133.4 285.4	UNICOM 122.8 (CTAF) 0
----------------------------	---	---------------------------------



ELEV 3443	TDZE 3443
------------------	------------------

4300

9000

YENUP

VGSI and RNAV glidepath not coincident (VGSI Angle 3.00/TCH 32).

YENUP

7 NM Holding Pattern

RW23

ZIRTA 1.8 NM to RW23

JIKBO 5100

YENUP

4060

5100

14000

7000

GP 3.00°

TCH 45

CATEGORY	A	B	C	D
LPV DA	3799-1 356 (400-1)			
LNAV/VNAV DA	3813-1 370 (400-1)			
LNAV MDA	3920-1 477 (500-1)		3920-1⅓ 477 (500-1⅓)	
CIRCLING	4020-1 577 (600-1)	4080-1 637 (700-1)	4100-1¼ 657 (700-1¼)	4220-2½ 777 (800-2½)

MIRL Rwy 5-23 and 11-29 0