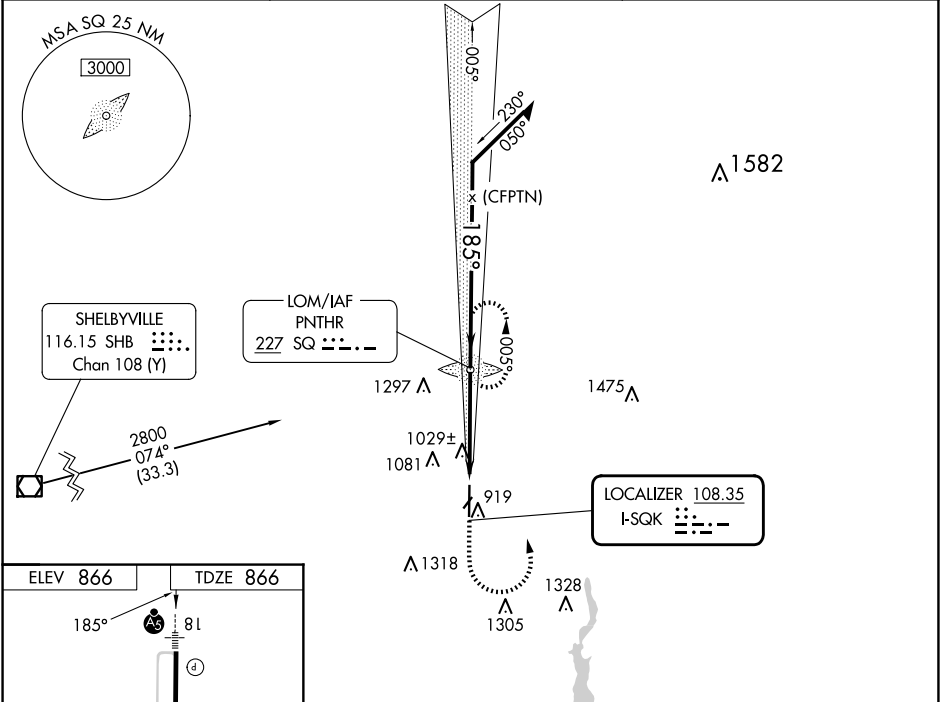


LOC I-SQK 108.35	APP CRS 185°	Rwy Idg TDZE Apt Elev 6503 866 866	ILS or LOC RWY 18 METTEL FLD (CEV)
----------------------------	------------------------	--	---------------------------------------

ADF required.		
<div><div>NA</div><div>Circling NA to Rwys 4 and 22. For inop MALSR, increase S-LOC 18 Cats C/D visibility to 1½ mile. When local altimeter setting not received, use James M Cox Dayton Intl altimeter setting and increase ILS DA to 1237 feet and visibility all Cats to ¾ mile, increase all MDA 140 feet and LOC Cats C/D visibility to 1½ mile, and Circling Cat B visibility to 1¼ miles and Cat C to 2¾ miles and Cat D to 3 miles. When using James M Cox Dayton Intl altimeter setting: for inop MALSR, increase S-ILS 18 all Cats visibility to 1 mile and increase S-LOC 18 Cat A/B visibility to 1 mile and Cat C/D to 1½ mile.</div></div>	<div><div>MALSR</div><div><div>AS</div><div></div></div></div>	<div>MISSED APPROACH: Climb to 2800 then left turn direct SQ LOM and hold.</div>

AWOS-3 118.325	COLUMBUS APP CON 134.45 352.05	UNICOM 122.8 (CTAF)
--------------------------	--	-------------------------------



ELEV 866	TDZE 866			
<div><div>185°</div><div>81</div><div>2800</div><div>074°</div><div>(33.3)</div><div>1297</div><div>1029±</div><div>1081</div><div>919</div><div>1318</div><div>1305</div><div>1328</div><div>LOCALIZER 108.35</div><div>I-SQK</div></div>				
<div><div>2800</div><div>SQ</div><div>2255</div><div>005°</div><div>2800</div><div>185°</div><div>2300</div><div>GS 3.00°</div><div>TCH 46</div><div>4.2 NM</div></div>				
MIRL Rwy 18-36	REIL Rwy 36	FAF to MAP 4.2 NM		
Knots	60	90	120	150
Min:Sec	4:12	2:48	2:06	1:41
	180	1:24		
CIRCLING	1440-1	1540-1	1620-2¼	1620-2½
	574 (600-1)	674 (700-1)	754 (800-2¼)	754 (800-2½)