

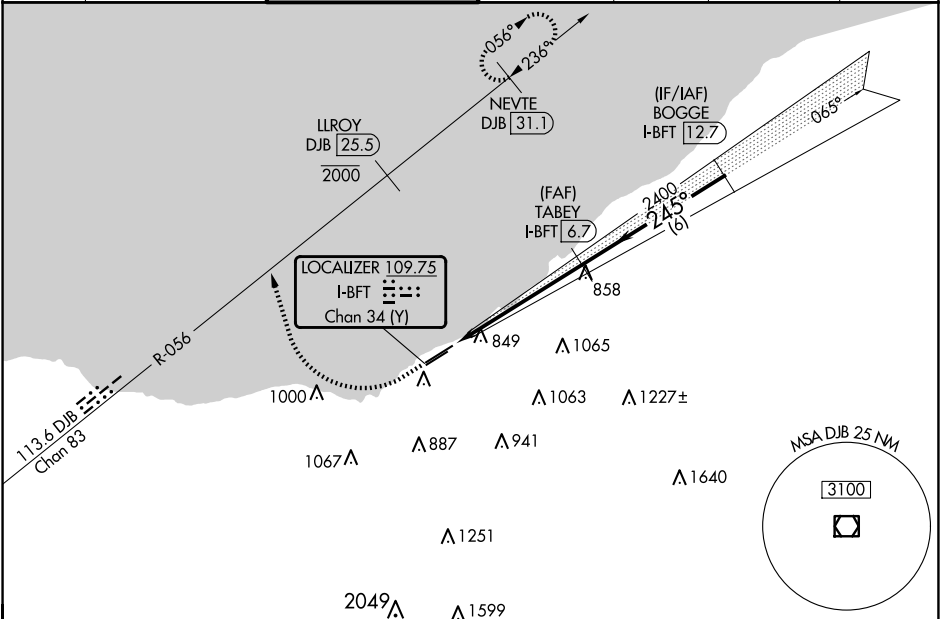
LOC/DME I-BFT	APP CRS	Rwy Idg	24R	24L
109.75	245°	TDZE	6003	5197
Chan 34 (Y)		Apt Elev	584	584

ILS or LOC RWY 24R

BURKE LAKEFRONT (BKL)

DME required. RADAR required for procedure entry.	MALSF	MISSED APPROACH: Climb to 1120 then climbing right turn heading 350° and DJB VOR/DME R-056 to cross LLROY/DJB 25.5 DME at or below 2000 then climb to 3000 on DJB VOR/DME R-056 northeast course to NEVTE/DJB 31.1 DME and hold.
<div><div>▼</div> Circling Rwy 6R NA at night. Rwy 24R helicopter visibility reduction below ¾ SM NA. Circling NA southeast of Rwy 6R-24L. S-ILS minimums NA when control tower closed.</div>	<div><div>✎</div></div>	

ATIS	CLEVELAND APP CON	LAKEFRONT TOWER ★	GND CON	CLNC DEL	CLNC DEL	UNICOM
125.25	125.35 346.325	124.3 (CTAF) 0 339.8	121.9 339.8	339.8	121.9 (when twr closed)	122.95 0



ELEV 584

D

TDZE 24R 583

TDZE 24L 584

1120

↑

hdg 350°

↷

DJB R-056

LLROY

DJB 25.5

2000

3000

↑

DJB R-056

NE crs

NEVTE

DJB 31.1

245°

6604 X 150

5197 X 100

TWR 649

1.4 NM

4.2 NM

6 NM

BOGGE

I-BFT 12.7

TABEY

I-BFT 6.7

I-BFT 2.4

I-BFT 1.1

2400

2400

2400

GS 3.00°

TCH 42

CATEGORY	A	B	C	D
S-ILS 24R	916-3⁄4 333 (400-3⁄4)			
S-LOC 24R	1060-3⁄4 477 (500-3⁄4)		1060-1½ 477 (500-1½)	
SIDESTEP 24L	1060-1 476 (500-1)		1060-1½ 476 (500-1½)	1060-2 476 (500-2)
CIRCLING	1060-1 476 (500-1)		1140-1½ 556 (600-1½)	1200-2 616 (700-2)