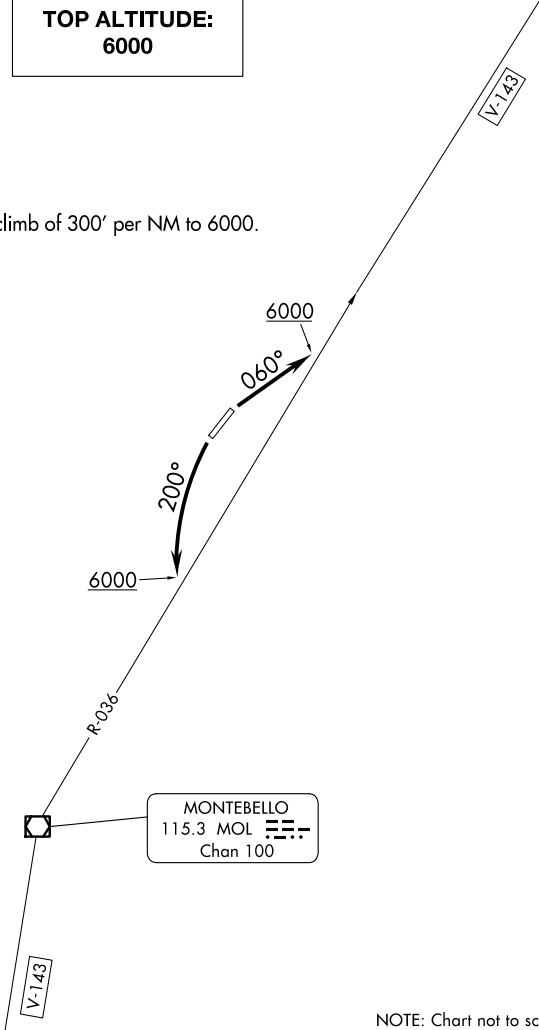


AWOS-3  
124.925  
CTAF  
123.0  
CLNC  
118.35  
POTOMAC DEP CON  
132.85 323.125

TOP ALTITUDE:  
6000

TAKEOFF MINIMUMS:  
Rwys 5, 23: Standard with minimum climb of 300' per NM to 6000.

NOTE: RADAR required.



NOTE: Chart not to scale.



DEPARTURE ROUTE DESCRIPTION

TAKEOFF RUNWAY 5: Climb heading 060° to 6000 to intercept MOL VOR/DME R-036 outbound, thence....  
TAKEOFF RUNWAY 23: Climbing left turn to 6000 heading 200° to intercept MOL VOR/DME R-036 inbound, thence....

....expect radar vectors to filed/assigned route. Expect clearance to filed altitude/flight level 10 minutes after departure.