

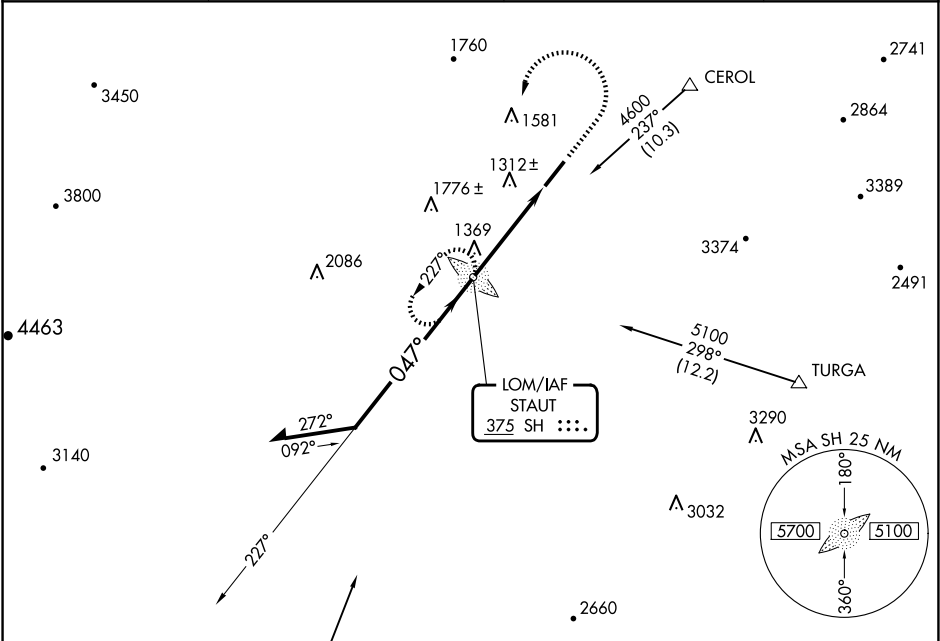
⚠

When local altimeter setting not received, use Charlottesville altimeter setting and increase all MDAs 140 feet and visibility S-5 and Circling Cat C ½ SM, Cat D ¼ SM.

MALSR

MISSED APPROACH: Climb to 2400 then climbing left turn to 3600 direct SH LOM and hold.

AWOS-3 124.925	POTOMAC APP CON 132.85 323.125	CLNC DEL 118.35	UNICOM 123.0 (CTAF) 0
-------------------	-----------------------------------	--------------------	--------------------------



ELEV 1201 TDZE 1184

REIL Rwy 23
HIRL Rwy 5-23

Remain within 10 NM

SH LOM 6000

3700

227°

047°

2800

3.50° TCH 60

4.2 NM

2400 3600 SH

VGSI and descent angles not coincident (VGSI Angle 3.00/TCH 56).

CATEGORY	A	B	C	D
S-5	1760-¾ 576 (600-¾)		1760-1 576 (600-1)	1760-1½ 576 (600-1½)
CIRCLING	1760-1 559 (600-1)		1900-2 699 (700-2)	2060-2¾ 859 (900-2¾)