

WAAS CH 50532 W05A	APP CRS 046°	Rwy Idg 3600 TDZE 1258 Apt Elev 1278
--	------------------------	---

RNAV (GPS) RWY 5

MARSHFIELD MUNI (MFI)

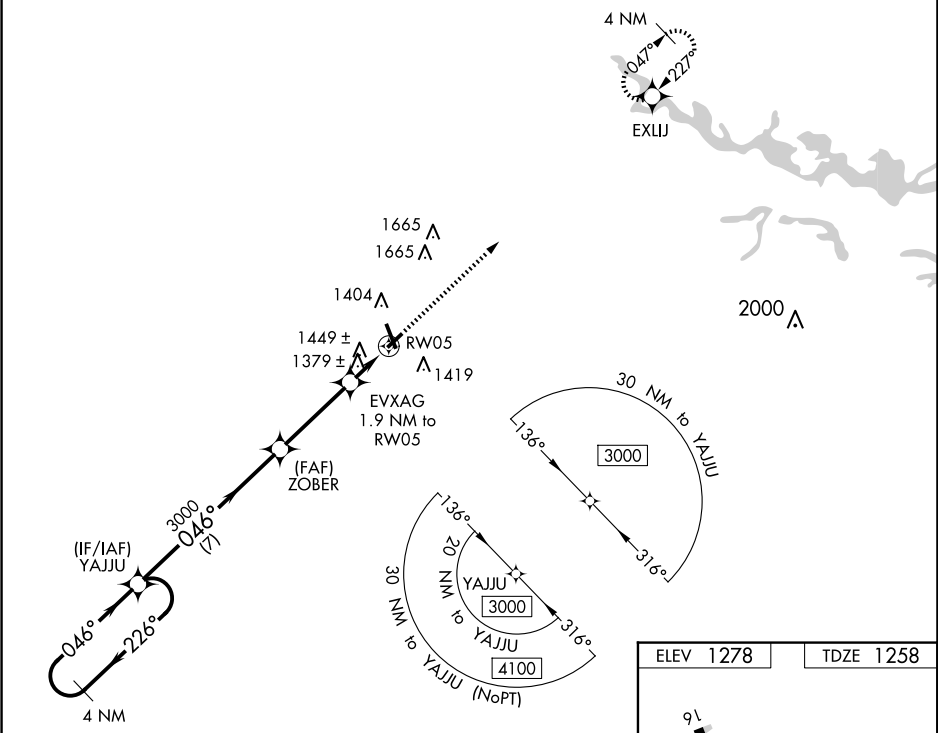
▼

⚠

DME/DME RNP-0.3 NA. When local altimeter setting not received, use Central Wisconsin altimeter setting and increase all MDA 60 feet, increase visibility LP Cat C/D ¼.

MISSED APPROACH:
Climb to 3000 direct EXLIJ and hold.

ASOS 121.575	MINNEAPOLIS CENTER 124.4 317.7	UNICOM 123.0 (CTAF) 0
------------------------	--	---------------------------------



VGSI and descent angles not coincident (VGSI Angle 3.00/TCH 29).				
4 NM Holding Pattern				
3000 ← 226° / 046° → 3000				
YAJJU				
ZOBER				
3.00° TCH 40				
EVLXAG 1.9 NM to RW05				
1880				
RW05				
7 NM				
3.5 NM				
1.9 NM				
CATEGORY	A	B	C	D
LP MDA	1640-1	382 (400-1)	1640-1½	382 (500-1½)
INAV MDA	1700-1	442 (500-1)	1700-1¾	442 (500-1¾)
CIRCLING	1760-1	482 (500-1)	2020-2¼ 742 (800-2¼)	2020-2½ 742 (800-2½)

