

VORTAC	EUF	Rwy Idg	5000
109.2	APP CRS	TDZE	285
Chan 29	356°	Apt Elev	285

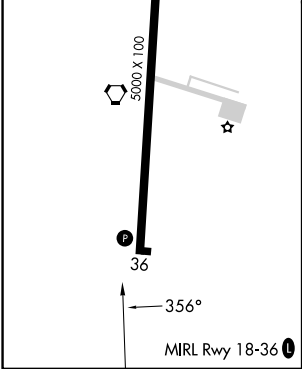
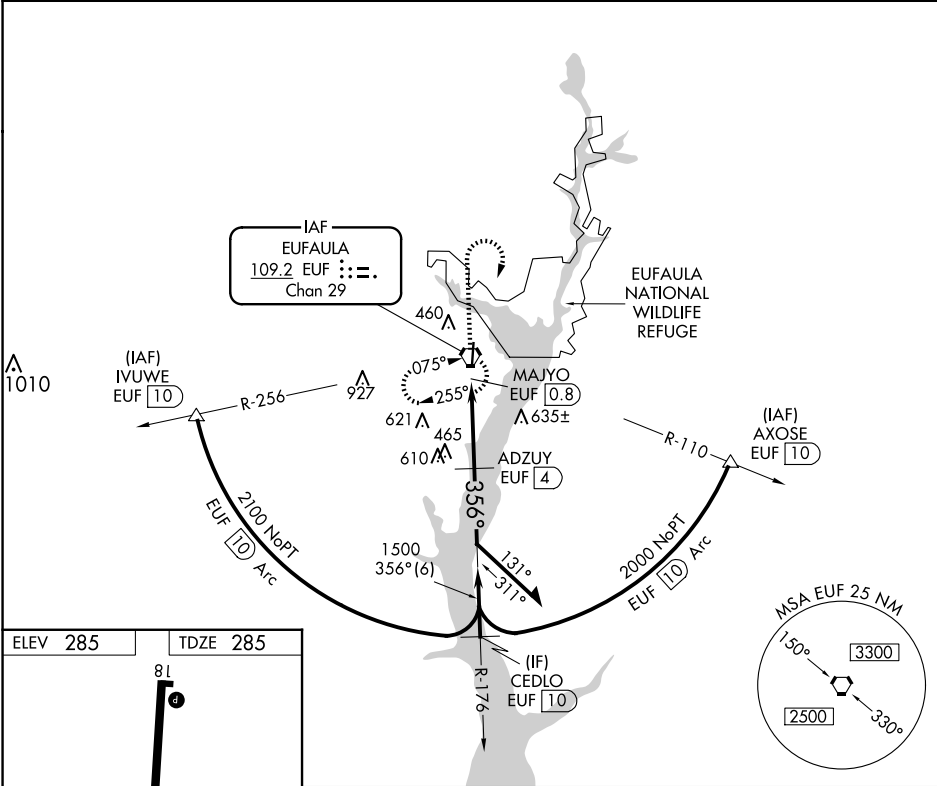
VOR/DME RWY 36
WEEDON FLD (EUF)

⚠ When local altimeter setting not received, use Columbus, GA altimeter setting and increase all MDAs 40 feet and S-36 visibility Cats C and D ½ SM and Circling Cats C and D ¼ SM. Rwy 36 helicopter visibility reduction below ¾ SM NA.

⚠ NA

MISSED APPROACH: Climb to 1500 then climbing right turn to 2000 direct EUF VORTAC and hold.

ASOS 128.325	ATLANTA APP CON ★ 125.5 323.1	CINC DEL 134.25 339.8	UNICOM 122.8 (CTAF) 0
------------------------	---	---------------------------------	---------------------------------



1500	2000	EUF	VGSI and descent angles not coincident (VGSI Angle 3.00/TCH 25).	
			EUF VORTAC	Remain within 10 NM
MAJYO EUF 0.8				
ADZUY EUF 4				
TCH 40				
0.5 3.2 NM				
CATEGORY	A	B	C	D
S-36	780-1 495 (500-1)		780-1 ³ / ₈ 495 (500-1 ³ / ₈)	
CIRCLING	920-1 635 (700-1)		1060-2 ¹ / ₄ 775 (800-2 ¹ / ₄)	1060-2 ¹ / ₂ 775 (800-2 ¹ / ₂)