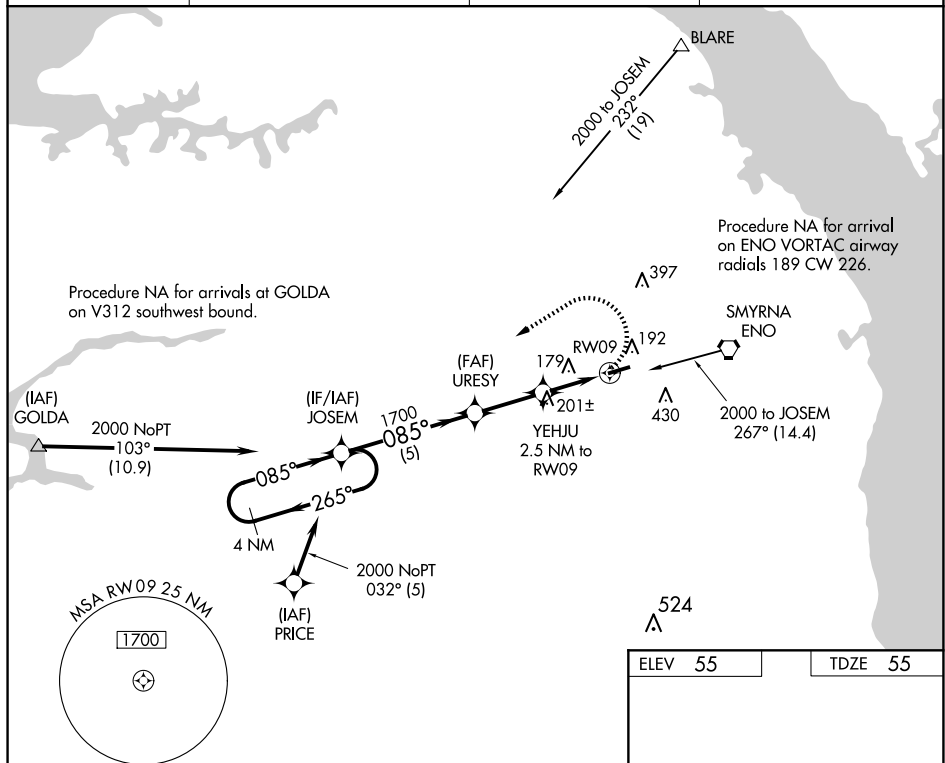


RNAV (GPS) RWY 9
DELAWARE AIRPARK (33N)

T When local altimeter setting not received, use Dover AFB altimeter
A setting. Rwy 9 helicopter visibility reduction below $\frac{3}{4}$ SM NA.

MISSED APPROACH: Climbing left turn to 2000 direct JOSEM and hold.

UNICOM
123.075 (CTAF) **L**



NE-3, 10 JUL 2025 to 07 AUG 2025

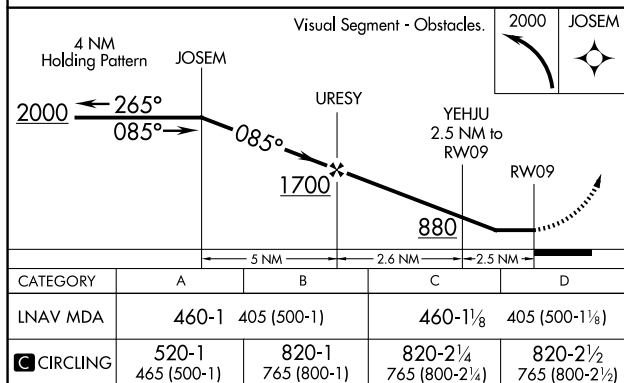


Diagram illustrating a rail section (4201 X 75) with a 085° angle and a 27' length. The diagram shows a cross-section of the rail with a star symbol indicating a specific feature.