

WAAS CH 82332 W36A	APP CRS 001°	Rwy Idg 4098 TDZE 572 Apt Elev 573
--	------------------------	---

RNAV (GPS) RWY 36

SALEM-LECKRONE (SLO)

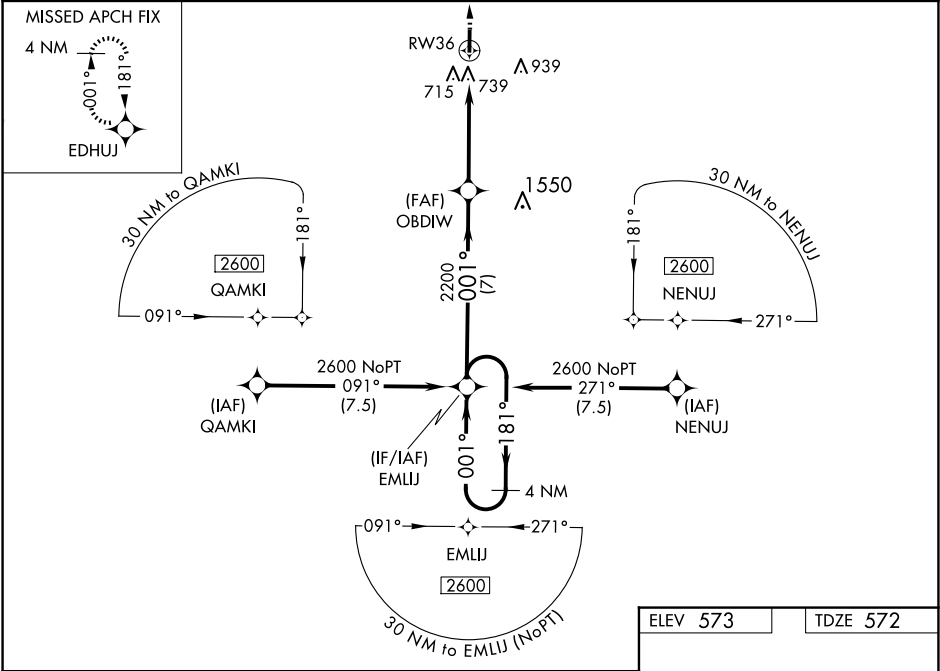
▼

▲

Baro-VNAV NA when using Centralia altimeter setting. For uncompensated Baro-VNAV systems, LNAV/VNAV NA below -21°C (-5°F) or above 54°C (130°F). When local altimeter setting not received, use Centralia altimeter setting: increase LPV DA to 1045 feet and visibility 1/8 SM; increase LNAV/VNAV DA to 1093 feet; increase all MDAs 40 feet and Circling Cats C/D visibility 1/4 SM. Procedure NA at night. DME/DME RNP-0.3 NA. Helicopter visibility reduction below 1 SM NA.

MISSED APPROACH: Climb to 2600 direct EDHUJ and hold.

AWOS-3PT 118.525	KANSAS CITY CENTER 127.7 351.825	UNICOM 122.725 (CTAF) 0
----------------------------	--	-----------------------------------



ELEV 573

TDZE 572

2600

EDHUJ

VGSI and RNAV glidepath not coincident (VGSI Angle 3.00/TCH 28).

4 NM

Holding Pattern

This section provides a detailed view of the holding pattern and missed approach. It shows the 4 NM holding pattern centered on EMLIJ, with 001° and 181° headings. The missed approach is shown as a 5 NM segment from EDHUJ to EMLIJ, followed by a 7 NM segment from EMLIJ to the 2600 MSL obstacle. The 2200 MSL obstacle is also shown near the 001° heading.

CATEGORY	A	B	C	D
LPV DA		1017-1½	445 (500-1½)	
LNAV/VNAV DA		1065-1¾	493 (500-1¾)	
LNAV MDA	1040-1	468 (500-1)	1040-1¾	468 (500-1¾)
CIRCLING	1040-1	467 (500-1)	1380-2¼ 807 (900-2¼)	1380-2½ 807 (900-2½)

