

WAAS CH 90230 W19A	APP CRS 186°	Rwy Idg TDZE 915 Apt Elev 925
--	------------------------	---

RNAV (GPS) RWY 19

KIRSCH MUNI (IRS)

RNP APCH - GPS.

⚠

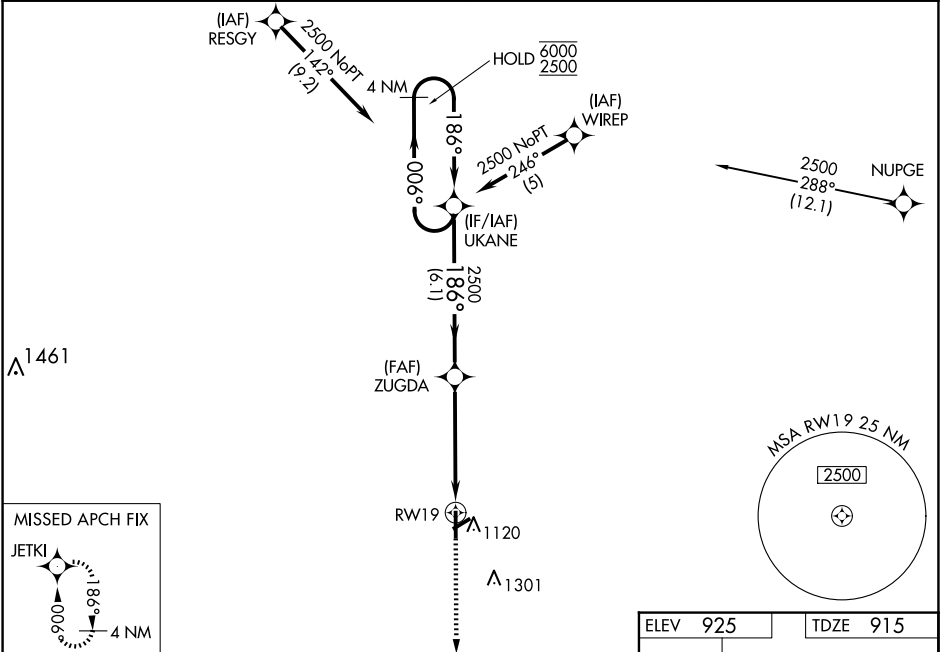
Circling Rwy 6 NA at night. Rwy 19 helicopter visibility reduction below ¾ SM NA. Baro-VNAV NA.

⚠

When local altimeter setting not received, use Three Rivers altimeter setting and increase LPV DA to 1276 feet and all visibilities ½ SM. Increase LNAV/VNAV DA to 1270 feet and all visibilities ½ SM. Increase all MDAs 60 feet and LNAV visibility Cat C/D ¼ SM, and Circling visibility Cat C/D ¼ SM.

MISSED APPROACH:
Climb to 3000 direct
JETKI and hold.

AWOS-3 121.325	GREAT LAKES APP CON ★ 121.2 239.25	CLNC DEL 118.325	UNICOM 123.05 (CTAF) 0
--------------------------	--	----------------------------	----------------------------------



VGSI and RNAV glidepath not coincident (VGSI Angle 3.00/TCH 27).				
4 NM Holding Pattern				
UKANE				
ZUGDA				
RWY 19				
GP 3.00° TCH 40				
6.1 NM 3.4 NM 1.5 NM				
CATEGORY	A	B	C	D
LPV DA	1235-7/8		320 (400-7/8)	
LNAV/VNAV DA	1229-7/8		314 (400-7/8)	
LNAV MDA	1400-1	485 (500-1)	1400-1 3/8	485 (500-1 3/8)
CIRCLING	1440-1	515 (600-1)	1620-2	1620-2 1/4
			695 (700-2)	695 (700-2 1/4)

