

WAAS CH 42915 W01A	APP CRS 006°	Rwy Idg 5201 TDZE 915 Apt Elev 925
--	------------------------	---

RNAV (GPS) RWY 1

KIRSCH MUNI (IRS)

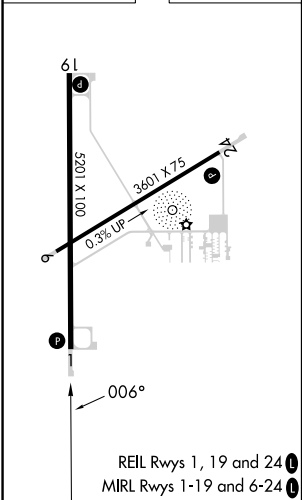
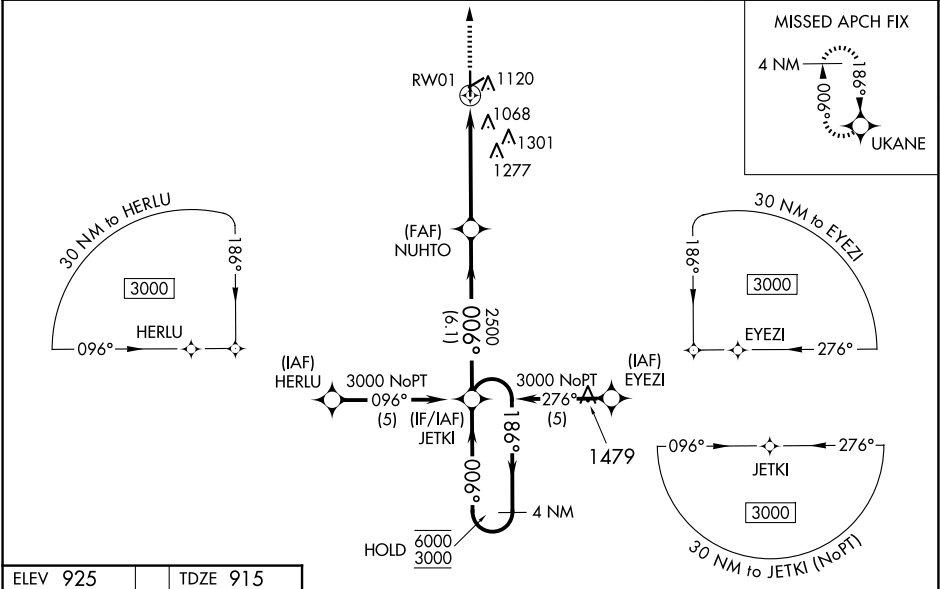
RNP APCH - GPS.

⚠ Circling Rwy 6 NA at night. Rwy 1 helicopter visibility reduction below $\frac{3}{4}$ SM NA. For uncompensated Baro-VNAV systems, LNAV/VNAV NA below -16°C or above 47°C. When local altimeter setting not received, use Three Rivers altimeter setting and increase LPV DA to 1219 feet; increase LNAV/VNAV DA to 1395 feet and all visibilities $\frac{1}{2}$ SM. Increase all MDAs 60 feet and LNAV visibility Cat C/D $\frac{1}{2}$ SM, and Circling visibility Cat C/D $\frac{1}{4}$ SM. VDP NA when using Three Rivers altimeter setting. Baro-VNAV NA when using Three Rivers altimeter setting.

MISSED APPROACH:

Climb to 2500 direct UKANE and hold.

AWOS-3 121.325	GREAT LAKES APP CON ★ 121.2 239.25	CLNC DEL 118.325	UNICOM 123.05 (CTAF) 0
--------------------------	--	----------------------------	---



2500

↑

UKANE

✦

VGSI and RNAV glidepath not coincident (VGSI Angle 3.00/TCH 26).

4 NM Holding Pattern

CATEGORY	A	B	C	D
LPV DA	1178- ⁷ / ₈ 263 (300- ⁷ / ₈)			
LNAV/VNAV DA	1354-1 ¹ / ₄ 439 (500-1 ¹ / ₄)			
LNAV MDA	1480-1 565 (600-1)	1480-1 ⁵ / ₈ 565 (600-1 ⁵ / ₈)		
CIRCLING	1480-1 555 (600-1)	1620-2 695 (700-2)	1620-2 ¹ / ₄ 695 (700-2 ¹ / ₄)	

EC-1, 10 JUL 2025 to 07 AUG 2025

EC-1, 10 JUL 2025 to 07 AUG 2025