

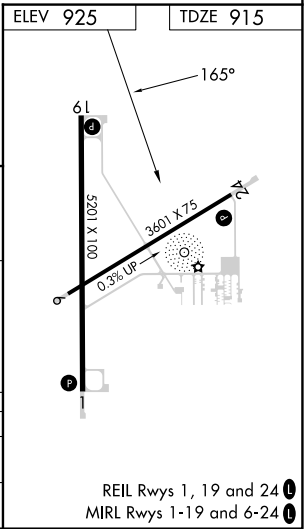
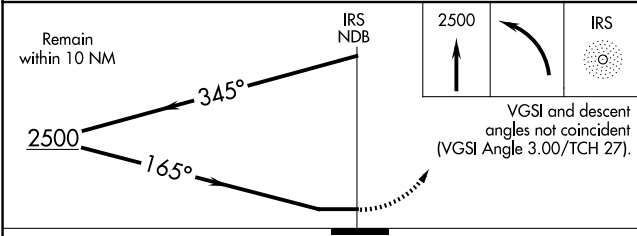
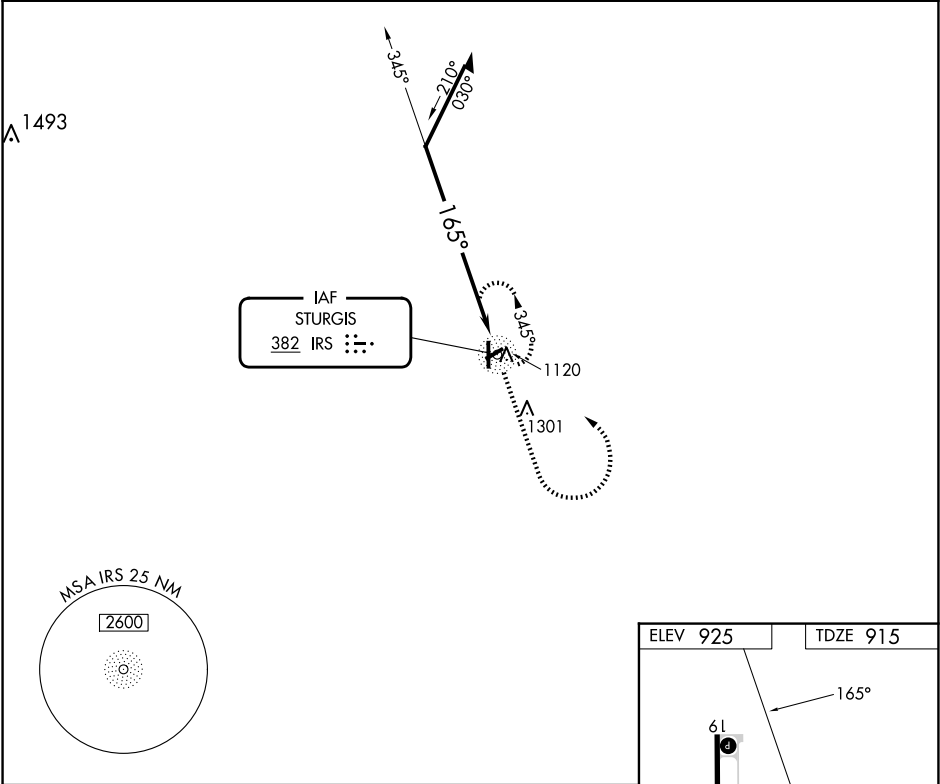
NDB IRS 382	APP CRS 165°	Rwy Idg TDZE Apt Elev	5201 915 925
-----------------------	------------------------	-----------------------------	---

NDB RWY 19

KIRSCH MUNI (IRS)

RADAR required for procedure entry.		MISSED APPROACH: Climb to 2500 then left turn direct IRS NDB and hold.
<div><div><div><div><div></div><div></div></div><div><div></div><div></div></div></div><div><div></div><div></div></div></div></div> <div>Procedure NA at night. Rwy 19 helicopter visibility reduction below 1 SM NA.</div>		

AWOS-3 121.325	GREAT LAKES APP CON ★ 121.2 239.25	CLNC DEL 118.325	UNICOM 123.05 (CTAF) 0
--------------------------	--	----------------------------	---



CATEGORY	A	B	C	D
S-19	1520-1	605 (600-1)	1520-1¾	605 (600-1¾)
CIRCLING	1520-1	595 (600-1)	1620-2 695 (700-2)	1620-2¼ 695 (700-2¼)

EC-1, 10 JUL 2025 to 07 AUG 2025

EC-1, 10 JUL 2025 to 07 AUG 2025